

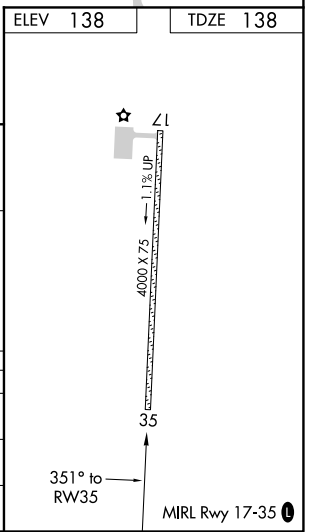
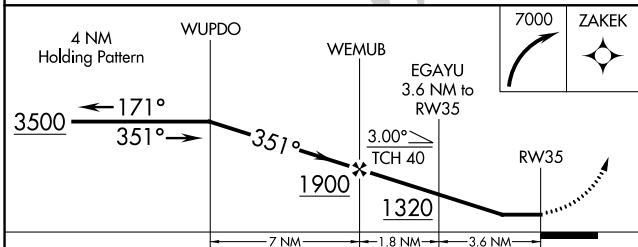
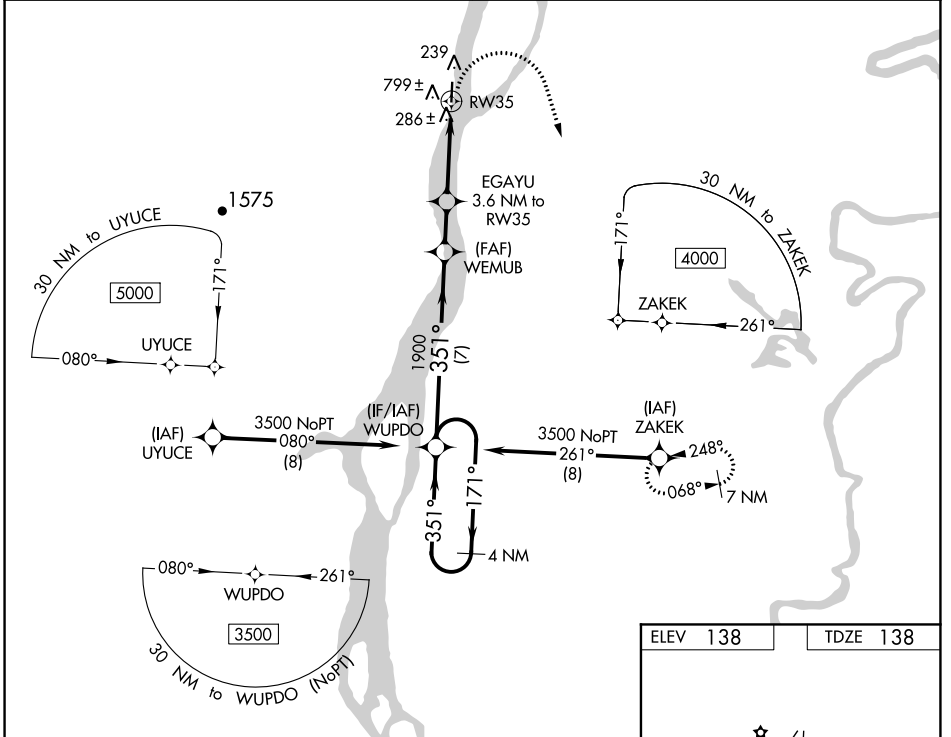
WAAS CH <b>48840</b> <b>W35A</b>	APP CRS <b>351°</b>	Rwy Idg TDZE <b>138</b> Apt Elev <b>138</b>	<b>4000</b>
--	------------------------	---	-------------

# RNAV (GPS) RWY 35

GRAYLING (KGX)(PAGX)

**⚠** Circling NA west of Rwy 17-35. Rwy 35 helicopter visibility reduction below ¼ SM NA. DME/DME RNP-0.3 NA.  
**⚠** NA Use Shageluk altimeter setting; when not received, use Anvik altimeter setting.  
**⚠** -24°C MISSED APPROACH: Climbing right turn to 7000 direct ZAKEK and hold, continue climb-in-hold to 7000.

SHX/PAHX AWOS-3P <b>121.575</b>	ANCHORAGE CENTER <b>118.15 251.05</b>	KENAI RADIO <b>122.4</b>	CTAF <b>122.9</b>
------------------------------------	--	-----------------------------	----------------------



CATEGORY	A	B	C	D
LP MDA	700-1	562 (600-1)	700-1½	562 (600-1½)
LNAV MDA	1080-1¼	942 (1000-1¼)	1080-2½	942 (1000-2½)
<b>C</b> CIRCLING	1100-1¼ 962 (1000-1¼)	1100-1½ 962 (1000-1½)	1220-3 1082 (1100-3)	1420-3 1282 (1300-3)

AK, 19 MAY 2022 to 14 JUL 2022

AK, 19 MAY 2022 to 14 JUL 2022