

(IPOXE2.IPOXE) 18312

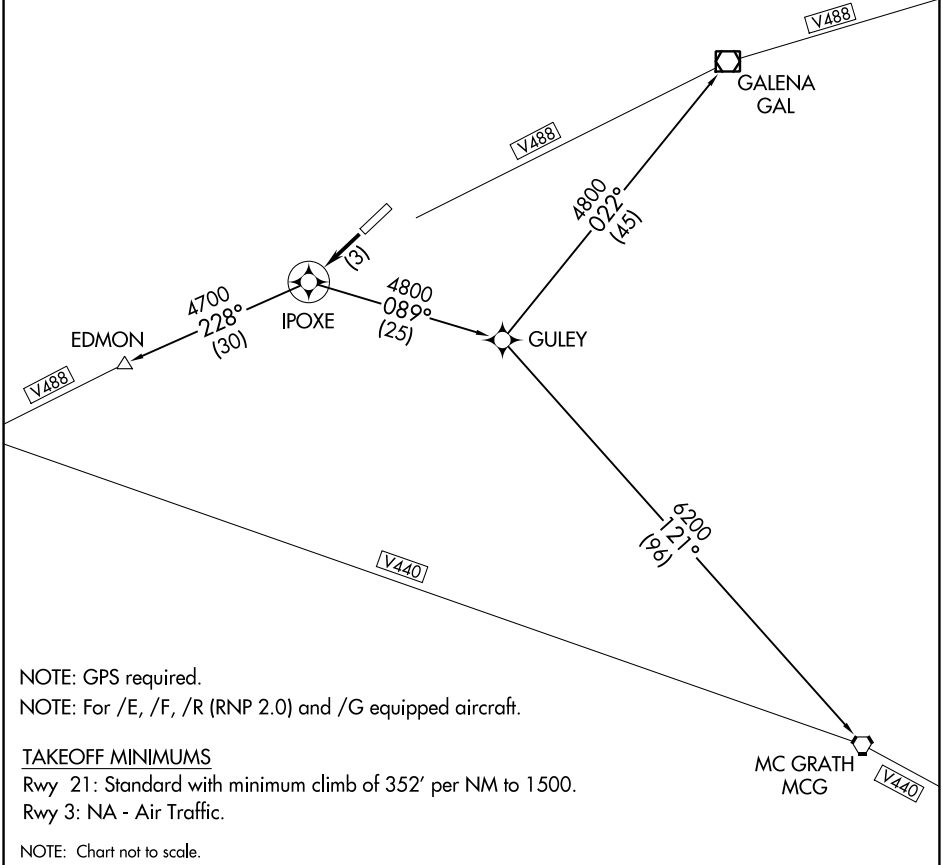
IPOXE TWO DEPARTURE (RNAV)

AL-10158 (FAA)

KALTAG (KAL) (PAKV)
KALTAG, ALASKA

ANCHORAGE CENTER
127.0 290.2

**TOP ALTITUDE:
ASSIGNED BY ATC**



AK, 19 MAY 2022 to 14 JUL 2022

AK, 19 MAY 2022 to 14 JUL 2022

NOTE: GPS required.
NOTE: For /E, /F, /R (RNP 2.0) and /G equipped aircraft.

TAKEOFF MINIMUMS

Rwy 21: Standard with minimum climb of 352' per NM to 1500.
Rwy 3: NA - Air Traffic.

NOTE: Chart not to scale.



DEPARTURE ROUTE DESCRIPTION

TAKEOFF RUNWAY 21: Climb direct IPOXE WP, thence . . .
. . . via assigned (transition), maintain 5500'.

EDMON TRANSITION (IPOXE2.EDMON)

GALENA TRANSITION (IPOXE2.GAL)

MC GRATH TRANSITION (IPOXE2.MCG)

IPOXE TWO DEPARTURE (RNAV)
(IPOXE2.IPOXE) 21JUL16

KALTAG, ALASKA
KALTAG (KAL) (PAKV)