

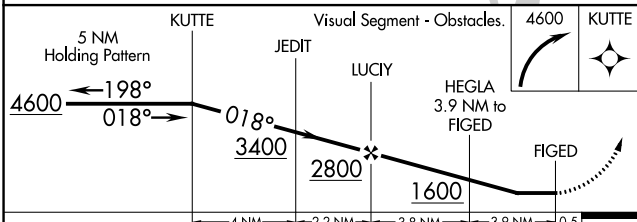
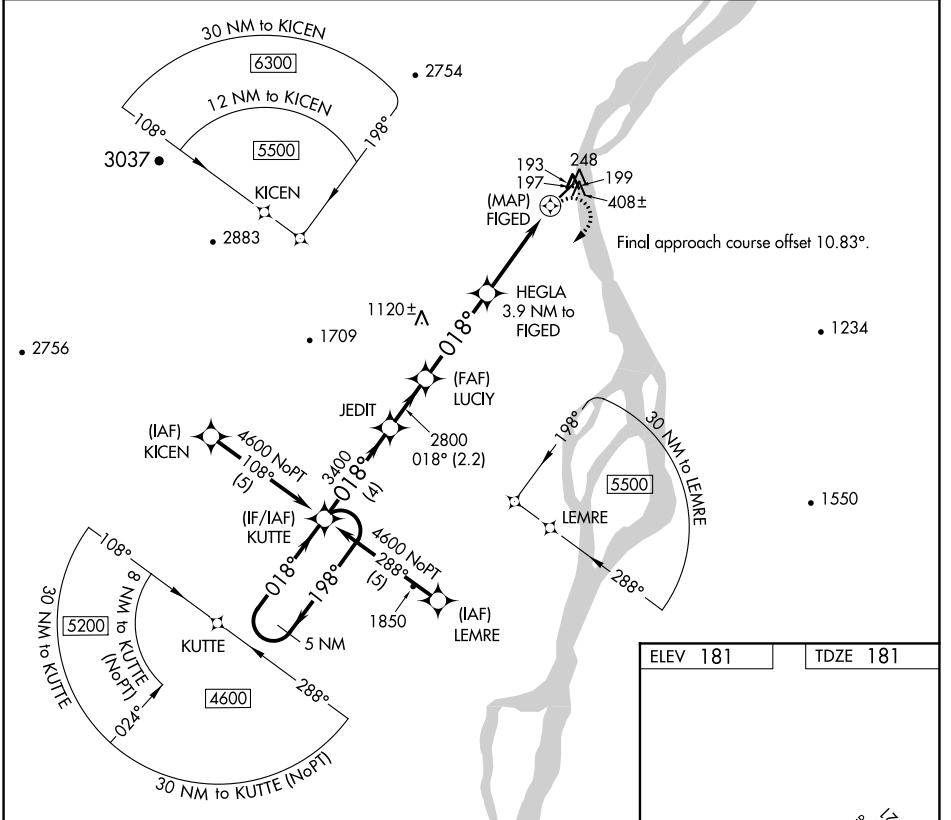
APP CRS	Rwy Idg	<b>3986</b>
<b>018°</b>	TDZE	<b>181</b>
	Apt Elev	<b>181</b>

# RNAV (GPS) RWY 3

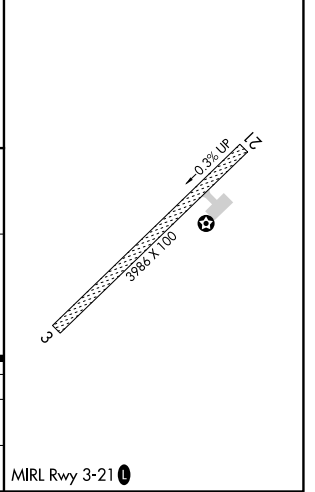
KALTAG (KAL)(PAKV)

DME/DME RNP-0.3 NA. Helicopter visibility reduction below 1 SM NA. Night Landing: Rwy 3 NA.	MISSED APPROACH: Climbing right turn to 4600 direct KUTTE and hold.
---	--

ASOS <b>135.25</b>	ANCHORAGE CENTER <b>127.0 290.2</b>	CTAF <b>122.9 0</b>
-----------------------	--	------------------------



ELEV 181	TDZE 181
----------	----------



CATEGORY	A	B	C	D
LNVA MDA	1280-1¼ 1099 (1100-1¼)	1280-1½ 1099 (1100-1½)	1280-3 1099 (1100-3)	NA
CIRCLING	1280-1¼ 1099 (1100-1¼)	1280-1½ 1099 (1100-1½)	1280-3 1099 (1100-3)	NA

AK, 19 MAY 2022 to 14 JUL 2022

AK, 19 MAY 2022 to 14 JUL 2022