

(ALTNN1 .ALTNN) 22139

AL-10263 (FAA)

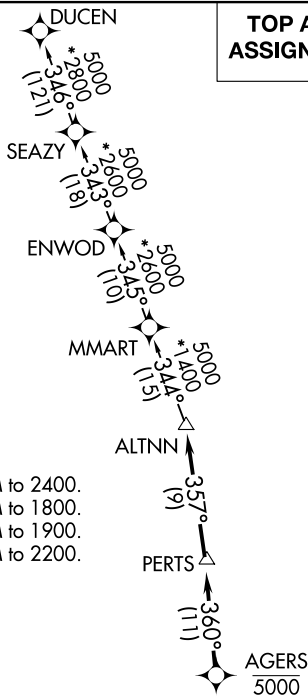
ALTNN ONE DEPARTURE (RNAV)

MIAMI HOMESTEAD GENERAL AVIATION (X51)
HOMESTEAD, FLORIDA

AWOS-3
118.375
CTAF
122.8
MIAMI DEP CON
125.5 354.1

RNAV 1 - DME/DME/IRU or GPS.
RADAR required.

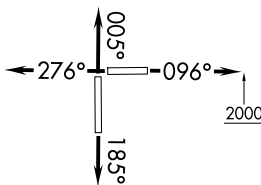
**TOP ALTITUDE:
ASSIGNED BY ATC**



TAKEOFF MINIMUMS

- Rwy 10: Standard with minimum climb of 500' per NM to 2400.
- Rwy 18: Standard with minimum climb of 500' per NM to 1800.
- Rwy 28: Standard with minimum climb of 500' per NM to 1900.
- Rwy 36: Standard with minimum climb of 500' per NM to 2200.

NOTE: Jet aircraft only.
NOTE: Accelerate to 250K, if unable, advise ATC.



NOTE: Chart not to scale.

DEPARTURE ROUTE DESCRIPTION

- TAKEOFF RUNWAY 10:** Climb on heading 096° to 2000, then as assigned for RADAR vectors to cross AGERS at 5000, thence. . . .
- TAKEOFF RUNWAY 18:** Climb on heading 185° or as assigned for RADAR vectors to cross AGERS at 5000, thence. . . .
- TAKEOFF RUNWAY 28:** Climb on heading 276° or as assigned for RADAR vectors to cross AGERS at 5000, thence. . . .
- TAKEOFF RUNWAY 36:** Climb on heading 005° or as assigned for RADAR vectors to cross AGERS at 5000, thence. . . .

. . . . on track 360° to PERTS, then on track 357° to ALTNN, then on assigned transition, maintain ATC assigned altitude, expect filed altitude within 10 minutes after departure.

DUCEN TRANSITION (ALTNN1.DUCEN)

ALTNN ONE DEPARTURE (RNAV)
(ALTNN1 .ALTNN) 19MAY22

HOMESTEAD, FLORIDA
MIAMI HOMESTEAD GENERAL AVIATION (X51)

SE-3, 16 JUN 2022 to 14 JUL 2022

SE-3, 16 JUN 2022 to 14 JUL 2022