

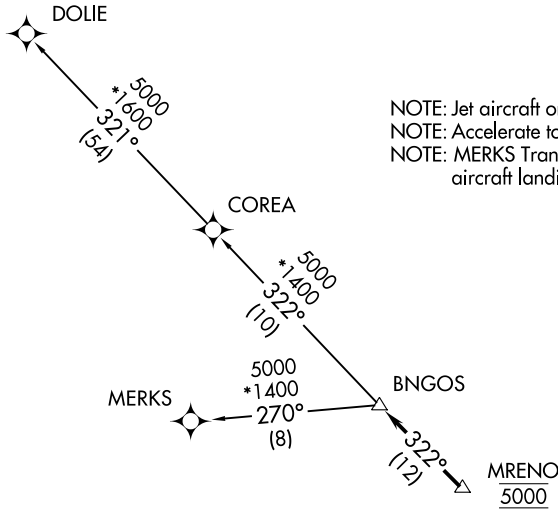
# BNGOS TWO DEPARTURE (RNAV)

RNAV-1 DME/DME/IRU or GPS.

RADAR required.

**TOP ALTITUDE:  
ASSIGNED BY ATC**

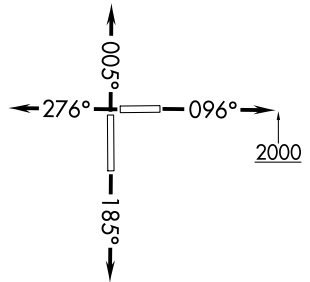
AWOS-3  
118.375  
CTAF  
122.8  
MIAMI DEP CON  
125.5 354.1



NOTE: Jet aircraft only.  
NOTE: Accelerate to 250K, if unable, advise ATC.  
NOTE: MERKS Transition ATC assigned only except aircraft landing: MKY, RSW, APF, and FMY.

### TAKEOFF MINIMUMS

- Rwy 10: Standard with minimum climb of 500' per NM to 2400.
- Rwy 18: Standard with minimum climb of 500' per NM to 1800.
- Rwy 28: Standard with minimum climb of 500' per NM to 1900.
- Rwy 36: Standard with minimum climb of 500' per NM to 2200.



NOTE: Chart not to scale.



### DEPARTURE ROUTE DESCRIPTION

- TAKEOFF RUNWAY 10: Climb on heading 096° to 2000, then as assigned for RADAR vectors to cross MRENO at 5000, thence. . .
- TAKEOFF RUNWAY 18: Climb on heading 185° or as assigned for RADAR vectors to cross MRENO at 5000, thence. . .
- TAKEOFF RUNWAY 28: Climb on heading 276° or as assigned for RADAR vectors to cross MRENO at 5000, thence. . .
- TAKEOFF RUNWAY 36: Climb on heading 005° or as assigned for RADAR vectors to cross MRENO at 5000, thence. . .

. . . on track 322° to BNGOS, then on transition, maintain ATC assigned altitude, expect clearance to filed altitude within 10 minutes after departure.

- COREA TRANSITION (BNGOS2.COREA)
- DOLIE TRANSITION (BNGOS2.DOLIE)
- MERKS TRANSITION (BNGOS2.MERKS)

SE-3, 16 JUN 2022 to 14 JUL 2022

SE-3, 16 JUN 2022 to 14 JUL 2022