

(FOLZZ2.FOLZZ) 22139

AL- 10263 (FAA)

# FOLZZ TWO DEPARTURE (RNAV)

MIAMI HOMESTEAD GENERAL AVIATION (X51)  
HOMESTEAD, FLORIDA

AWOS-3  
118.375  
CTAF  
122.8  
MIAMI DEP CON  
125.5 354.1

**TOP ALTITUDE:  
ASSIGNED BY ATC**

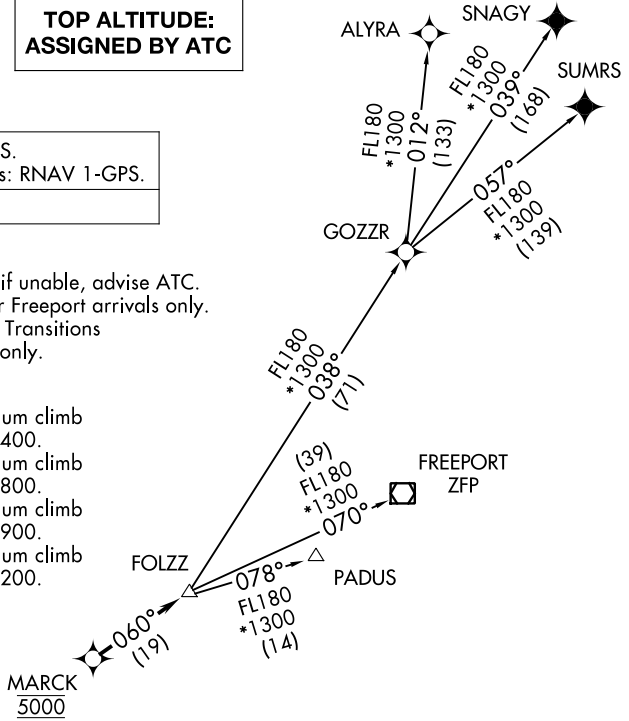
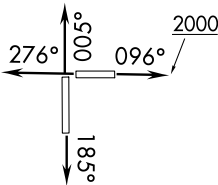
RNAV-1 DME/DME/IRU or GPS.  
SNAGY and SUMRS Transitions: RNAV 1-GPS.

RADAR required.

- NOTE: Jet aircraft only.
- NOTE: Accelerate to 250K, if unable, advise ATC.
- NOTE: PADUS Transition for Freeport arrivals only.
- NOTE: SNAGY and SUMRS Transitions for European traffic only.

### TAKEOFF MINIMUMS

- Rwy 10: Standard with minimum climb of 500' per NM to 2400.
- Rwy 18: Standard with minimum climb of 500' per NM to 1800.
- Rwy 28: Standard with minimum climb of 500' per NM to 1900.
- Rwy 36: Standard with minimum climb of 500' per NM to 2200.



NOTE: Chart not to scale.

### DEPARTURE ROUTE DESCRIPTION

- TAKEOFF RUNWAY 10: Climb on heading 096° to 2000 then as assigned for RADAR vectors to cross MARCK at 5000, thence. . .
- TAKEOFF RUNWAY 18: Climb on heading 185° or as assigned for RADAR vectors to cross MARCK at 5000, thence. . .
- TAKEOFF RUNWAY 28: Climb on heading 276° or as assigned for RADAR vectors to cross MARCK at 5000, thence. . .
- TAKEOFF RUNWAY 36: Climb on heading 005° or as assigned for RADAR vectors to cross MARCK at 5000, thence. . .

. . .on track 060° to FOLZZ, then on transition. Maintain ATC assigned altitude, expect clearance to filed altitude within 10 minutes after departure.

- ALYRA TRANSITION (FOLZZ2.ALYRA)
- FREEPORT TRANSITION (FOLZZ2.ZFP)
- GOZZR TRANSITION (FOLZZ2.GOZZR)
- PADUS TRANSITION (FOLZZ2.PADUS)
- SNAGY TRANSITION (FOLZZ2.SNAGY)
- SUMRS TRANSITION (FOLZZ2.SUMRS)

FOLZZ TWO DEPARTURE (RNAV)  
(FOLZZ2.FOLZZ) 19MAY22

HOMESTEAD, FLORIDA  
MIAMI HOMESTEAD GENERAL AVIATION (X51)

SE-3, 16 JUN 2022 to 14 JUL 2022

SE-3, 16 JUN 2022 to 14 JUL 2022