

(LIFRR1.LIFRR) 22139

LIFRR ONE DEPARTURE (RNAV)

AL-10263 (FAA)

MIAMI HOMESTEAD GENERAL AVIATION (X51)

HOMESTEAD, FLORIDA

**TOP ALTITUDE:
ASSIGNED BY ATC**

RNAV 1 - DME/DME/IRU or GPS.

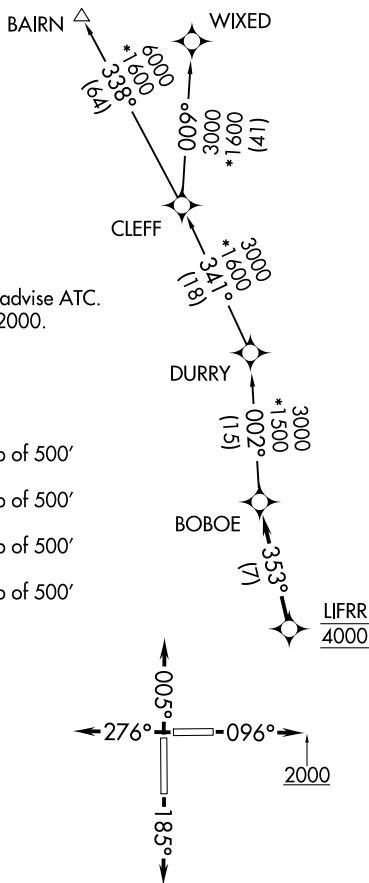
RADAR required.

AWOS-3
118.375
CTAF
122.8
MIAMI DEP CON
125.5 354.1

NOTE: Jet aircraft only.
NOTE: Accelerate to 250K, if unable, advise ATC.
NOTE: For aircraft filed at or below 12000.

TAKEOFF MINIMUMS

- Rwy 10: Standard with minimum climb of 500' per NM to 2400.
- Rwy 18: Standard with minimum climb of 500' per NM to 1800.
- Rwy 28: Standard with minimum climb of 500' per NM to 1900.
- Rwy 36: Standard with minimum climb of 500' per NM to 2200.



NOTE: Chart not to scale.



DEPARTURE ROUTE DESCRIPTION

- TAKEOFF RUNWAY 10: Climb on heading 096° to 2000, then as assigned by ATC for vectors to cross LIFRR at 4000, thence. . .
- TAKEOFF RUNWAY 18: Climb on heading 185° or as assigned by ATC for vectors to cross LIFRR at 4000, thence. . .
- TAKEOFF RUNWAY 28: Climb on heading 276° or as assigned by ATC for vectors to cross LIFRR at 4000, thence. . .
- TAKEOFF RUNWAY 36: Climb on heading 005° or as assigned by ATC for vectors to cross LIFRR at 4000, thence. . .

. . . on track 353° to BOBOE, then on assigned transition, maintain ATC assigned altitude, expect clearance to filed altitude within 10 minutes after departure.

BAIRN TRANSITION (LIFRR1.BAIRN)
WIXED TRANSITION (LIFRR1.WIXED)

LIFRR ONE DEPARTURE (RNAV)

(LIFRR1.LIFRR) 19MAY22

HOMESTEAD, FLORIDA

MIAMI HOMESTEAD GENERAL AVIATION (X51)

SE-3, 16 JUN 2022 to 14 JUL 2022

SE-3, 16 JUN 2022 to 14 JUL 2022