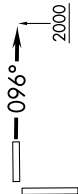


SE-3, 16 JUN 2022 to 14 JUL 2022

AWOS-3
118.375
CTAF
122.8
MIAMI DEP CON
123.5 354.1

RNAV1 - DME/DME/IRU or GPS.
From SLIPT to MAXIM: RNAV 1 - GPS.
From SLIPT to CANOA: RNAV 1 - GPS.
RADAR required.

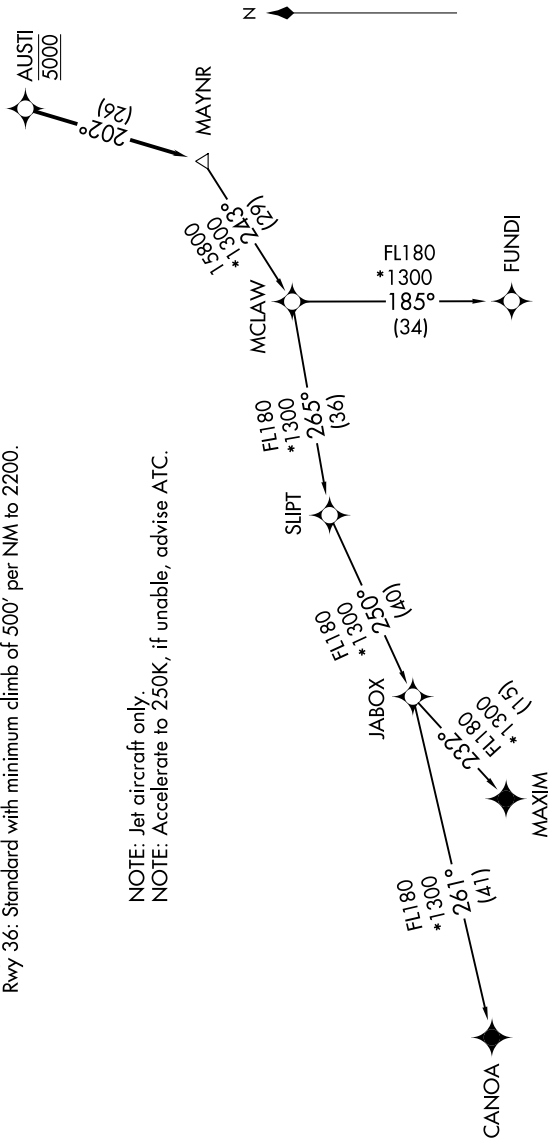
TOP ALTITUDE:
ASSIGNED BY ATC



TAKEOFF MINIMUMS

- Rwy 10: Standard with minimum climb of 500' per NM to 2400.
- Rwy 18: Standard with minimum climb of 500' per NM to 1800.
- Rwy 28: Standard with minimum climb of 500' per NM to 1900.
- Rwy 36: Standard with minimum climb of 500' per NM to 2200.

NOTE: Jet aircraft only.
NOTE: Accelerate to 250K, if unable, advise ATC.



NOTE: Chart not to scale.

(NARRATIVE ON FOLLOWING PAGE)

SE-3, 16 JUN 2022 to 14 JUL 2022