

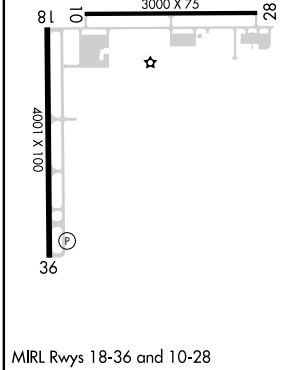
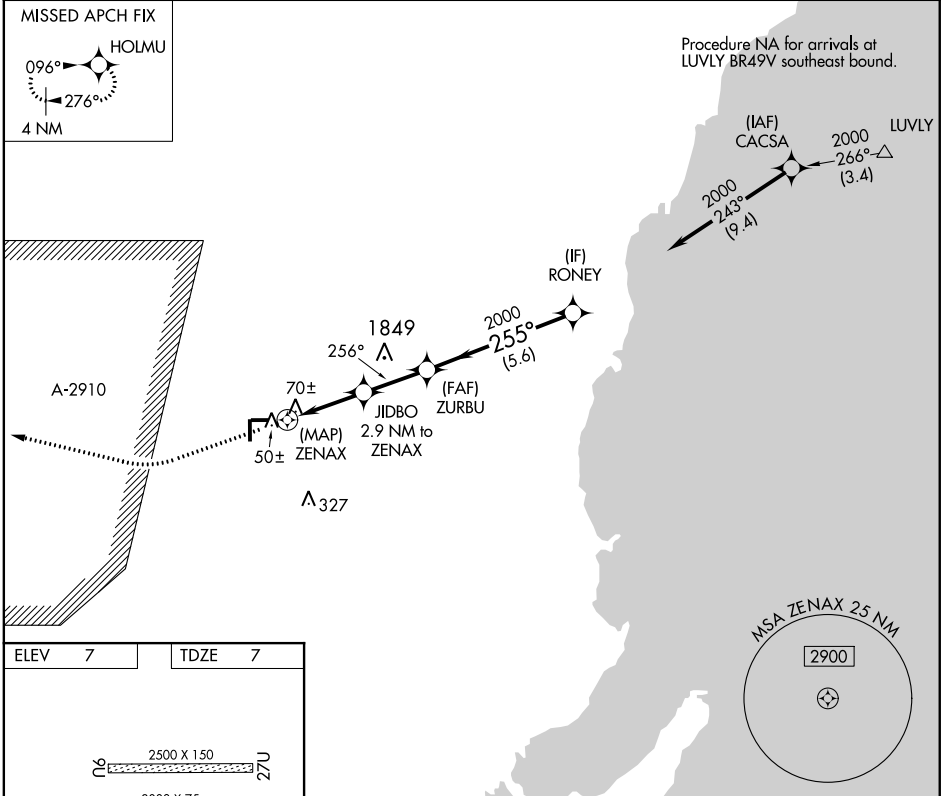
| | | |
|-------------|----------|-------------|
| APP CRS | Rwy Idg | 3000 |
| 256° | TDZE | 7 |
| | Apt Elev | 7 |

RNAV (GPS) RWY 28

MIAMI HOMESTEAD GENERAL AVIATION (X51)

| | |
|---|--|
| <p>▼ NA</p> <p>When local altimeter setting not received, use Miami Exec altimeter setting and increase all MDAs 40 feet. DME/DME RNP-0.3 NA.</p> | <p>MISSED APPROACH: Climb to 500, then climbing right turn to 2000 direct HOLMU and hold.</p> |
|---|--|

| | | |
|-------------------------------------|--|--|
| <p>AWOS-3</p> <p>118.375</p> | <p>MIAMI APP CON</p> <p>125.5 354.1</p> | <p>UNICOM</p> <p>122.8 (CTAF)</p> |
|-------------------------------------|--|--|



| | | | | |
|----------|-------------|-------------|---|-------------------|
| 500 | 2000 | HOLMU | VGSI and descent angles not coincident. | Procedure Turn NA |
| | | | | |
| 0.7 | 2.9 NM | 2.4 NM | 5.6 NM | |
| CATEGORY | A | B | C | D |
| LNAV MDA | 320-1 | 313 (400-1) | NA | |
| CIRCLING | 380-1 | 460-1 | NA | |
| | 373 (400-1) | 453 (500-1) | | |

SE-3, 16 JUN 2022 to 14 JUL 2022

SE-3, 16 JUN 2022 to 14 JUL 2022