

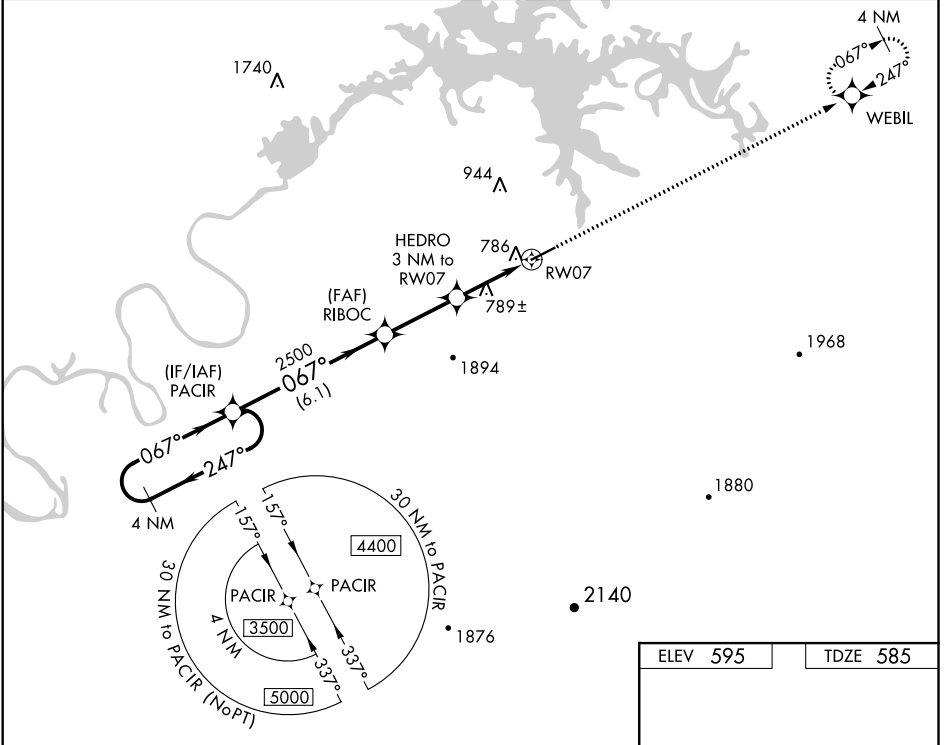
WAAS CH 48927 W07A	APP CRS 067°	Rwy ldg 5500 TDZE 585 Apt Elev 595
--	------------------------	---

RNAV (GPS) RWY 7

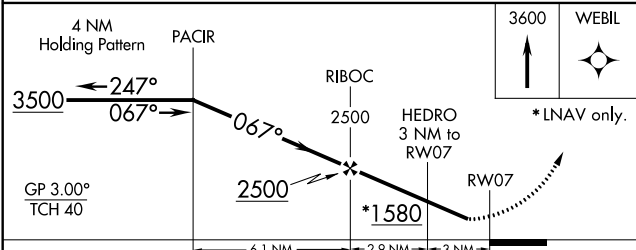
CENTRE-PIEDMONT CHEROKEE COUNTY RGNL (PYP)

<p>▼ Baro-VNAV NA. DME/DME RNP-0.3 NA. Helicopter visibility reduction below 3/4 SM NA. ▲ NA Use Gadsden altimeter setting; when not received use Anniston altimeter setting and increase all DA/MDA 20 feet; increase LPV all Cats and LNAV Cats C/D visibility 1/8 mile.</p>	<p>MISSED APPROACH: Climb to 3600 direct WEBIL and hold.</p>
---	---

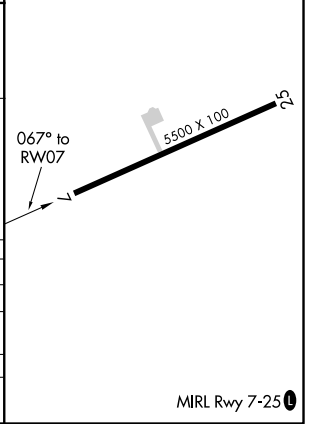
GAD AWOS-3PT 127.825	ATLANTA CENTER 124.5 270.325	CTAF 122.90
--------------------------------	--	-----------------------



ELEV 595	TDZE 585
-----------------	-----------------



CATEGORY	A	B	C	D
LPV DA		896-1	311 (400-1)	
LNAV/VNAV DA		1009-1½	424 (500-1½)	
LNAV MDA	1100-1	515 (600-1)	1100-1⅓	515 (600-1⅓)
CIRCLING	1160-1	565 (600-1)	1160-1½	1160-2 565 (600-2)



SE-4, 16 JUN 2022 to 14 JUL 2022

SE-4, 16 JUN 2022 to 14 JUL 2022