

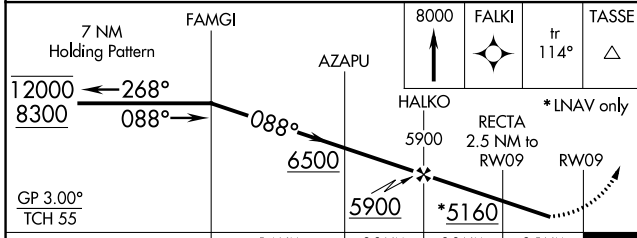
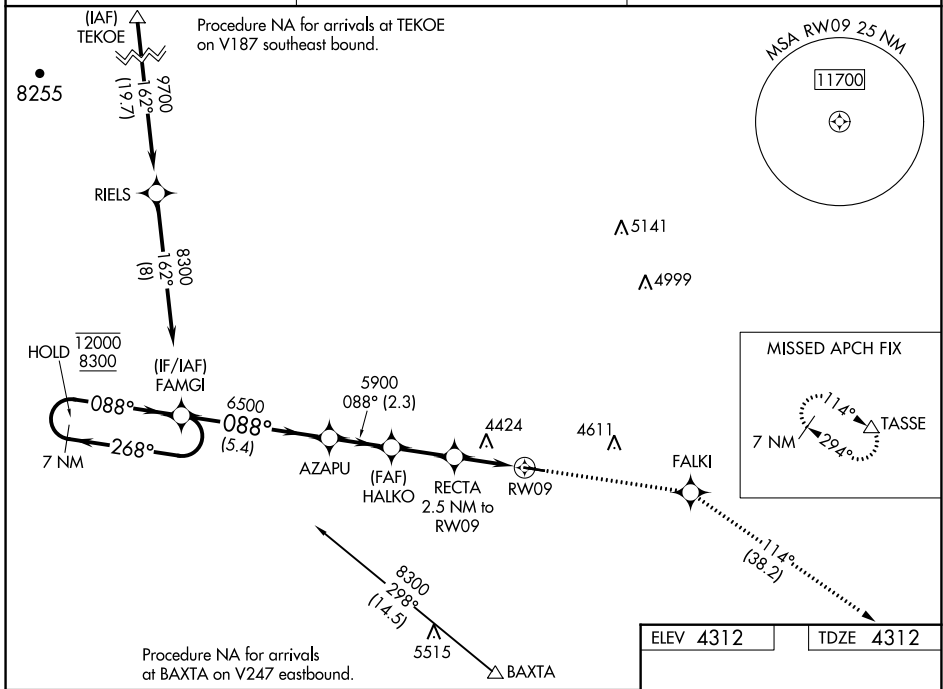
WAAS CH 99443 W09A	APP CRS 088°	Rwy Idg 4200 TDZE 4312 Apt Elev 4312
--	------------------------	---

RNAV (GPS) RWY 9

WHEATLAND COUNTY AT HARLOWTON (HWQ)

RNP APCH.	<p>▼ Rwy 9 helicopter visibility reduction below 1 SM NA. Baro-VNAV NA. ▲ NA Use Lewistown altimeter setting. Straight-in Rwy 9 NA at night, Circling Rwy 9 NA at night.</p>	<p>MISSED APPROACH: Climb to 8000 direct FALKI and on track 114° to TASSE and hold.</p>
-----------	--	---

LWT ASOS 118.375	SALT LAKE CENTER 127.75 351.9	CTAF 122.90
----------------------------	---	-----------------------



ELEV 4312	TDZE 4312									
<table border="1"> <tr> <td>8000</td> <td>FALKI</td> <td>TASSE</td> </tr> <tr> <td>↑</td> <td>✦</td> <td>tr 114°</td> </tr> <tr> <td></td> <td></td> <td>△</td> </tr> </table>		8000	FALKI	TASSE	↑	✦	tr 114°			△
8000	FALKI	TASSE								
↑	✦	tr 114°								
		△								
<p>MIRL Rwy 9-27</p>										

NW-1, 16 JUN 2022 to 14 JUL 2022

NW-1, 16 JUN 2022 to 14 JUL 2022