

WAAS CH <b>53340</b> <b>W23A</b>	APP CRS <b>227°</b>	Rwy Idg TDZE Apt Elev	<b>6370</b> <b>4892</b> <b>4892</b>
--	------------------------	-----------------------------	---

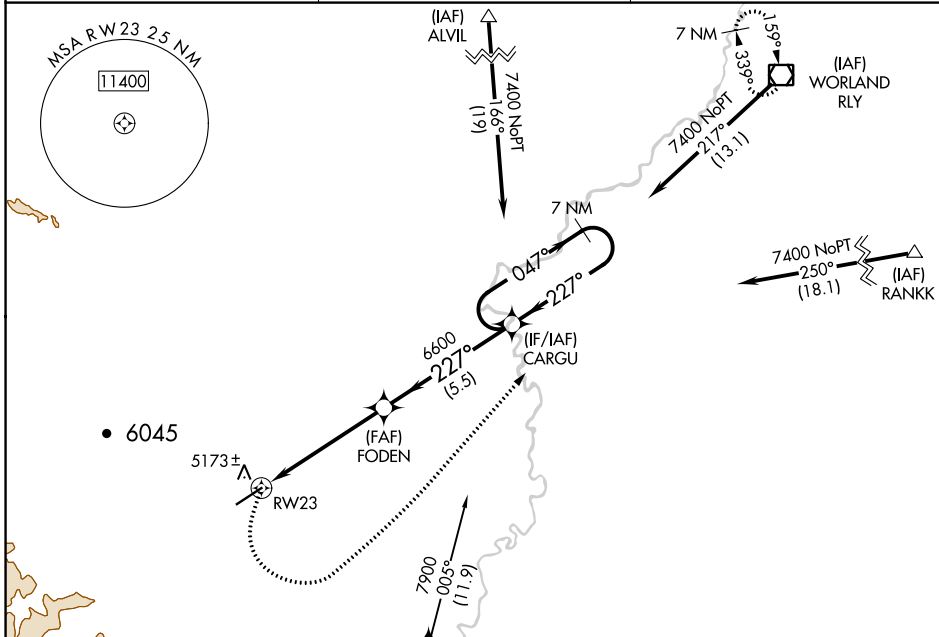
# RNAV (GPS) RWY 23

HOT SPRINGS COUNTY (HISG)

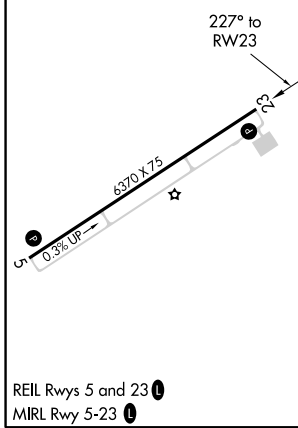
**⚠** For uncompensated Baro-VNAV systems, LNAV/VNAV NA below -24°C (-11°F) or above 54°C (130°F). Circling NA northwest of Rwy 5-23. DME/DME RNP-0.3 NA.

**⚠** MISSED APPROACH: Climbing left turn to 8400 direct RLY VOR/DME and hold.

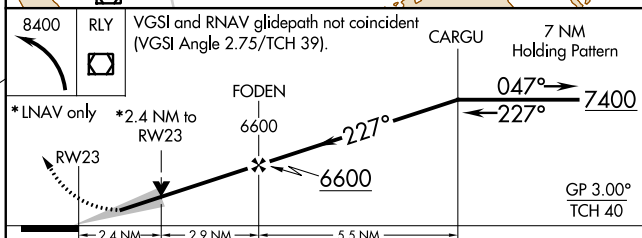
AWOS-3PT <b>121.125</b>	SALT LAKE CENTER <b>133.25 285.6</b>	UNICOM <b>122.8 (CTAF)</b> <b>📻</b>
----------------------------	---	--



ELEV 4892	TDZE 4892
-----------	-----------



Procedure NA for arrival on BOY VOR/DME airway radials 322 CW 087.



CATEGORY	A	B	C	D
LPV DA		5382-1¾	490 (500-1¾)	
LNAV/VNAV DA		5577-2½	685 (700-2½)	
LNAV MDA	5620-1	728 (800-1)	5620-2	728 (800-2)
<b>C</b> CIRCLING	5620-1	728 (800-1)	5620-2	5880-3 988 (1000-3)

NW-1, 16 JUN 2022 to 14 JUL 2022

NW-1, 16 JUN 2022 to 14 JUL 2022