

APCH CRS	Rwy Idg	50
037°	TDZE	1707
	Arpt Elev	1707

AL-11678 [USN]

BLUEGRASS (9VA5)

Obtain local altimeter on Bluegrass Advsy, when not rcvd use DULLES Intl altimeter.
 FEMA SPECIAL FACILITY (Bluegrass) normal opr 0745-1630L Mon-Fri.
 Phone 504-542-3014 for PPR.

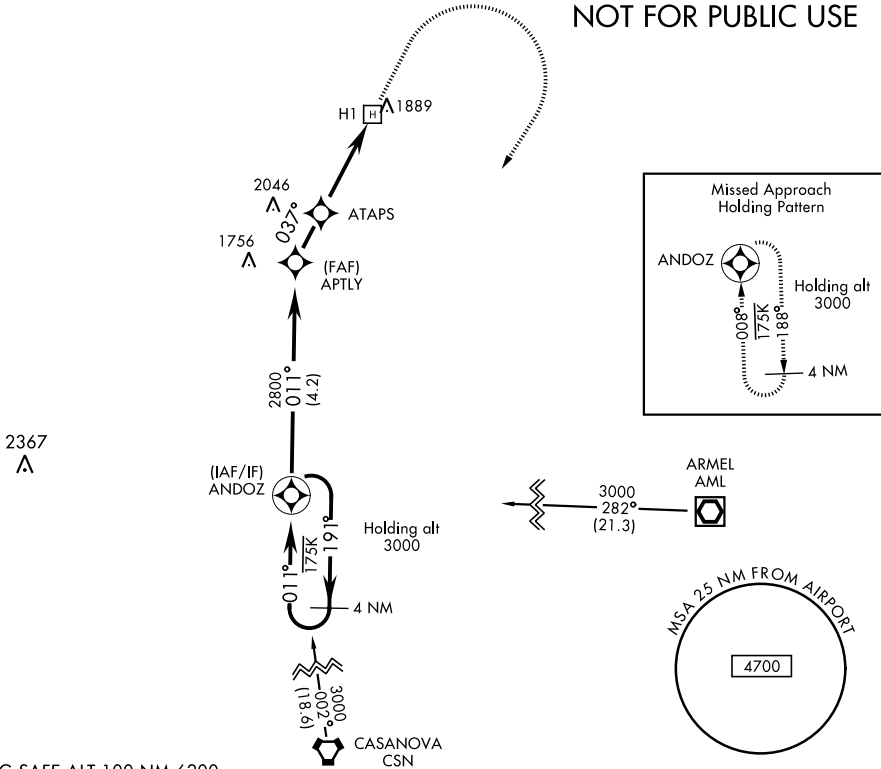
MISSED APPROACH: Climb to 2700 then climbing right turn to 3000 direct ANDOZ and hold.

POTOMAC APP CON
120.45 306.925

BLUEGRASS ADVISORY ★
126.2 241.0

DME/DME RNP-0.3 NA
 Visibility reduction by Helicopters NA.

**RESTRICTED
 NOT FOR PUBLIC USE**



EMERG SAFE ALT 100 NM 6200

ANDOZ		2000	3000	ANDOZ	ELEV 1707	TDZE 1707
CATEGORY	COPTER					
LNVA MDA	2220-1 513 (600-1)					
WASHINGTON DULLES INTL ALTIMETER SETTING						
LNVA MDA	2460-1 753 (800-1)					

NE-3, 16 JUN 2022 to 14 JUL 2022

NE-3, 16 JUN 2022 to 14 JUL 2022