

COPTER VOR/DME or TACAN 056°

VORTAC LDN 114.3 Chan 90	APCH CRS 056°	Rwy ldg TDZE 1707 Arpt Elev 1707
--	-------------------------	--

AL-11678 [USN]

BLUEGRASS (9VA5)

Circling not authorized.
Visibility reduction by helicopter NA.

MISSED APPROACH: Climb to 3000, then climbing right turn to 4000, intercept LDN VORTAC R-056 to WLCAT and hold.

POTOMAC APP CON
120.45 306.925

BLUEGRASS ADVISORY ★
126.2 241.0

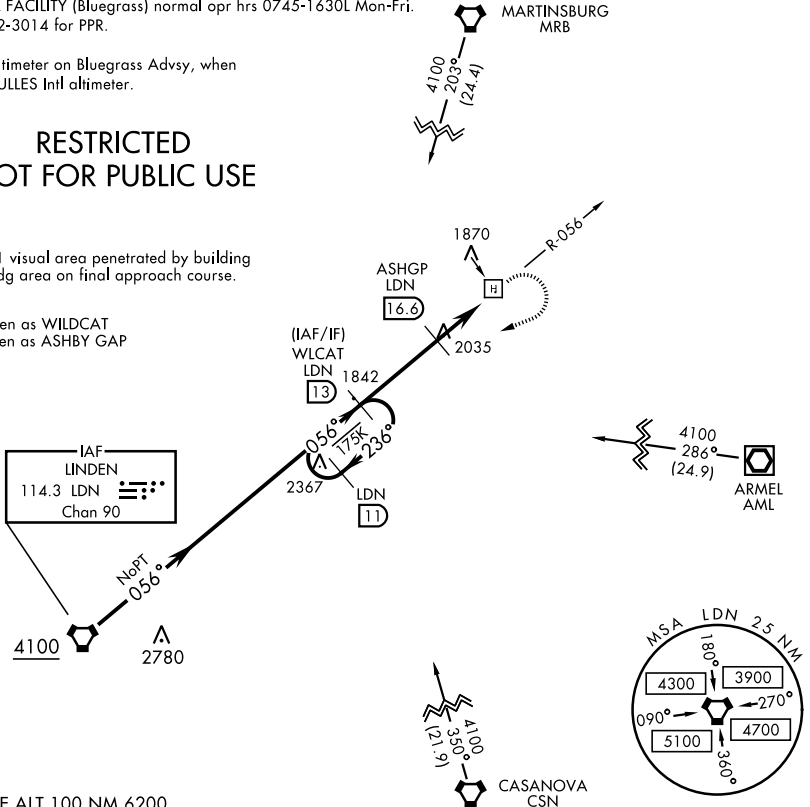
FEMA SPECIAL FACILITY (Bluegrass) normal opr hrs 0745-1630L Mon-Fri.
Phone 540-542-3014 for PPR.

Obtain local altimeter on Bluegrass Advsy, when not rcvd use DULLES Intl altimeter.

RESTRICTED NOT FOR PUBLIC USE

CAUTION: 20:1 visual area penetrated by building 500' prior to ldg area on final approach course.

WLCAT - spoken as WILDCAT
ASHGP - spoken as ASHBY GAP



NE-3, 16 JUN 2022 to 14 JUL 2022

NE-3, 16 JUN 2022 to 14 JUL 2022

EMERG SAFE ALT 100 NM 6200

2 NM holding pattern	3000	4000	WLCAT LDN 13	ELEV 1707	TDZE 1707
Diagram showing holding pattern and approach	Diagram showing terrain profile with trees and grass area				
CATEGORY	COPTER				
H-056	2380-1	673	(700-1)		
DULLES INTL ALTIMETER SETTING					
H-056	2640-1¼	933	(1000-1¼)		

COPTER VOR/DME or TACAN 056°