

## ROCK SPRINGS

**SOUTHWEST WYOMING RGNL** (RKS)(KRKS) 7 E UTC-7(-6DT) N41°35.65' W109°03.91'

**SALT LAKE CITY**  
H-3E, L-11E  
IAP, AD

6765 B ARFF Index—See Remarks NOTAM FILE RKS

**RWY 09-27:** H10000X150 (ASPH-GRVD) S-55, D-240, 2S-140,  
2D-503 PCN 63 F/A/X/T HIRL

**RWY 09:** ODALS. PAPI(P4L)—GA 3.0° TCH 50'. 0.3% up.

**RWY 27:** MALSR. PAPI(P4L)—GA 3.0° TCH 55'. 0.4% down.

**RWY 03-21:** H5228X75 (ASPH-PFC) S-59, D-88, 2D-159  
PCN 27 F/A/X/T MIRL 0.3% up NE

**RWY 03:** REIL. PAPI(P2L)—GA 3.0° TCH 30'.

**RWY 21:** REIL. PAPI(P2L)—GA 3.0° TCH 30'.

**RUNWAY DECLARED DISTANCE INFORMATION**

**RWY 03:** TORA-5228 TODA-5228 ASDA-5228 LDA-5228

**RWY 09:** TORA-10000 TODA-10000 ASDA-10000 LDA-10000

**RWY 21:** TORA-5228 TODA-5228 ASDA-5228 LDA-5228

**RWY 27:** TORA-10000 TODA-10000 ASDA-10000 LDA-10000

**SERVICE:** S2 FUEL 100LL, JET A1+ OX 3, 4 LGT ACTIVATE MALSR

Rwy 27, ODALS Rwy 09, REIL Rwy 03 and Rwy 21, HIRL Rwy 09-27 and twy lgts—CTAF. PAPI Rwy 09, Rwy 27, Rwy 03 and Rwy 21 opr continuously.

**AIRPORT REMARKS:** Attended 1130-0500Z±. PPR for air carrier ops with more than 30 pax seats 1130-0500Z±, call arpt ops 307-352-6888. ARFF Index C avbl with 30 min notice: call arpt ops 307-352-6888.

**AIRPORT MANAGER:** 307-352-6880

**WEATHER DATA SOURCES:** ASOS 118.375 (307) 362-2541. SAWRS.

**COMMUNICATIONS:** CTAF/UNICOM 122.8

ROCK SPRING RCO 122.2 (CASPER RADIO)

Ⓡ SALT LAKE CENTER APP/DEP CON 124.35

**CLEARANCE DELIVERY PHONE:** For CD if una to ctc on FSS freq, ctc Salt Lake ARTCC at 801-320-2568.

**AIRSPACE:** CLASS E.

**RADIO AIDS TO NAVIGATION:** NOTAM FILE RKS.

**ROCK SPRINGS (H) (H) VORW/DME** 116.0 OCS Chan 107 N41°35.41' W109°00.92' 263° 2.3 NM to fld.  
6785/13E.

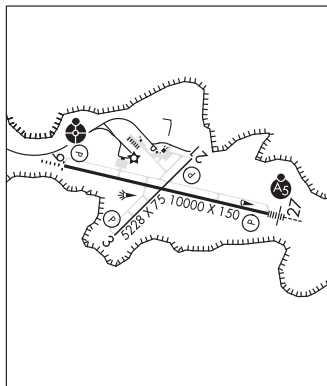
VOR unusable:

186°-195° byd 25 NM blo 14,000'

DME unusable:

122°-127° byd 25 NM blo 12,000'

**ILS/DME** 109.3 I-RKS Chan 30 Rwy 27. Class 1E.



## SARATOGA

**SHIVELY FLD** (SAA)(KSAA) 1 SW UTC-7(-6DT) N41°26.61' W106°49.65'

7014 B NOTAM FILE CPR

**CHEYENNE**  
H-3E, L-9E, 11E  
IAP

**RWY 05-23:** H8801X100 (ASPH-PFC) S-50 PCN 50 F/D/X/U MIRL

**RWY 05:** REIL. PAPI(P4L)—GA 3.0° TCH 49'. 1.8% down.

**RWY 23:** REIL. PAPI(P4L)—GA 3.0° TCH 47'. 1.8% up.

**SERVICE:** FUEL 100LL, JET A LGT ACTVT REIL Rwy 05 and Rwy 23;  
PAPI Rwy 05 and Rwy 23; MIRL Rwy 05-23—CTAF.

**AIRPORT REMARKS:** Attended Apr-Nov 1500-0000Z±, Dec-Mar 1500-2300Z±. Full svc fuel. Fee applied jet acct. After hrs call 307-326-8344. Antelope may be on rwy. Wind shear over highway approach end of Rwy 23. Ldg fee, \$100 for turbo jet and \$75 for turbo prop acct.

**AIRPORT MANAGER:** 307-326-8344

**WEATHER DATA SOURCES:** AWOS-3PT 118.175 (307) 326-5387.

**COMMUNICATIONS:** CTAF/UNICOM 122.8

Ⓡ DENVER CENTER APP/DEP CON 132.1

**CLEARANCE DELIVERY PHONE:** For CD ctc Denver ARTCC at 303-651-4257.

**RADIO AIDS TO NAVIGATION:** NOTAM FILE CPR.

**CHEROKEE (H) (H) VORW/DME** 115.0 CKW Chan 97 N41°45.34' W107°34.92' 104° 38.8 NM to fld. 7050/15E.

**SARATOGA NDB (MHW)** 266 SAA N41°26.70'

W106°49.93' at fld. 6925/12E.

