

COBB CO INTL/MCCOLLUM FLD (See ATLANTA on page 186)

COCHRAN (48A) 4 E UTC-5(-4DT) N32°24.04' W83°16.70'
377 B NOTAM FILE MCN

ATLANTA
L-18J
IAP

RWY 11-29: H4401X75 (ASPH) MIRL 1.0% up NW

RWY 11: PAPI(P2L)—GA 3.25° TCH 45'. Trees.

RWY 29: PAPI(P2L)—GA 3.0° TCH 40'. Fence.

RWY 05-23: H3202X50 (ASPH) S-25 0.3% up NE

RWY 05: Trees.

RUNWAY DECLARED DISTANCE INFORMATION

RWY 23: TORA-3202 TODA-3202 ASDA-3202 LDA-3062

SERVICE: S2 FUEL 100LL, JET A+ LGT MIRL Rwy 11-29 preset low dawn-1300, dusk-0200Z‡; to actvt or incrs instst—CTAF.

AIRPORT REMARKS: Attended Mon-Sat 1300-1700Z‡. Rwy 05-23 is daylight use only. 24 hr fuel self svc with major credit card. NSTD turnarounds, inadequate separation Rwy 05-23.

AIRPORT MANAGER: 478-291-6582

WEATHER DATA SOURCES: AWOS-3PT 120.975 (478) 271-5897.

COMMUNICATIONS: CTAF/UNICOM 122.8

Ⓡ **ATLANTA APP/DEP CON** 124.2 (1115-0400Z‡)

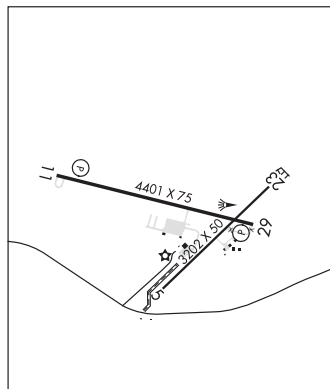
ATLANTA CENTER APP/DEP CON 134.5 (0400-1115Z‡)

CLEARANCE DELIVERY PHONE: For CD ctc Atlanta Apch at 678-364-6132, when Apch clsd ctc Atlanta ARTCC at 770-210-7692.

RADIO AIDS TO NAVIGATION: NOTAM FILE MCN.

VIENNA (VL) (L) VORTAC 116.5 VNA Chan 112 N32°12.81' W83°29.84' 044° 15.8 NM to fld. 300/1E.

DME unusable:
014°-024°



COFFEE CO N31°24.29' W82°55.43' NOTAM FILE MCN.

JACKSONVILLE
L-24H

NDB (MHW) 390 OWC 043° 5.4 NM to Douglas Muni. 230/6W. NDB unmonitored 2300-1300Z‡.

COLUMBUS (CSG)(KCSG) 3 NE UTC-5(-4DT) N32°30.98' W84°56.33'

ATLANTA
H-9A, 12F, L-18I
IAP, AD

397 B ARFF Index—See Remarks NOTAM FILE CSG

RWY 06-24: H6997X150 (ASPH-GRVD) D-160, 2D-250

PCN 9 F/B/W/T HIRL

RWY 06: MALSR. PAPI(P4L)—GA 2.61° TCH 48'. RVR-T Trees.

RWY 24: REIL. PAPI(P4L)—GA 3.0° TCH 64'. Bldg.

RWY 13-31: H3997X75 (ASPH-PFC) S-12 PCN 12 F/B/W/T MIRL 0.7% up NW

RWY 13: REIL. PAPI(P4L)—GA 3.0° TCH 36'. Tree.

RWY 31: REIL. VASI(V2L)—GA 3.0° TCH 60'. Pole.

RUNWAY DECLARED DISTANCE INFORMATION

RWY 06: TORA-6997 TODA-6997 ASDA-6997 LDA-6997

RWY 13: TORA-3997 TODA-3997 ASDA-3997 LDA-3997

RWY 24: TORA-6997 TODA-6997 ASDA-6997 LDA-6997

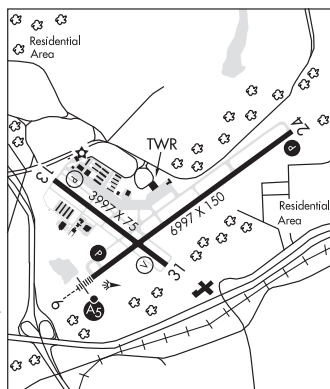
RWY 31: TORA-3997 TODA-3997 ASDA-3997 LDA-3997

SERVICE: S4 FUEL 100LL, JET A LGT 1400-0200Z‡, after 0200Z‡, ACTIVATE HIRL Rwy 06-24, MIRL Rwy 13-31, MALSR Rwy 06, REIL Rwy 24, PAPI Rwy 06 and Rwy 24, twy lgts and windcone lgts—CTAF.

AIRPORT REMARKS: Attended continuously. Rwy 13-31 clsd to acr. Rwy 13-31 not avbl for sked acr opns with more than psgr seats or unsked acr at least 31 psgr seats. Fuel: self serve 100LL avbl 24 hrs. Birds on and in/ovf arpt. Class I, ARFF Index A. Index B aircraft rescue and firefighting equipment avbl. Be alert for Rwy 06 at Twy D int dep instructions with rwy rmng 5085 ft TORA/TODA/ASDA. Be alert for Rwy 06 at Twy F int dep instructions with rwy rmng 5623 ft TORA/TODA/ASDA.

AIRPORT MANAGER: 706-324-2449

WEATHER DATA SOURCES: ASOS (706) 576-4715 LLWAS.



CONTINUED ON NEXT PAGE

CONTINUED FROM PRECEDING PAGE

COMMUNICATIONS: CTAF 120.1 ATIS 127.75 UNICOM 122.95

RCO 122.65 (MACON RADIO)

Ⓡ ATLANTA APP/DEP CON 125.5 (1115-0300Z‡) 126.55 (7000' and abv)

ATLANTA CENTER APP/DEP CON 120.45 (0300-1115Z‡)

TOWER 120.1 (1400-0200Z‡) GND CON 121.9

CLEARANCE DELIVERY PHONE: For CD if una to ctc on FSS freq, ctc Atlanta Apch at 678-364-6132, when ATCT clsd ctc Atlanta ARTCC at 770-210-7692.

AIRSPACE: CLASS D svc 1400-0200Z‡; other times CLASS E.

RADIO AIDS TO NAVIGATION: NOTAM FILE CSG.

(L) (L) VORTACW 117.1 CSG Chan 118 N32°36.92' W85°01.06' 145° 7.1 NM to fld. 630/1E.

TACAN AZIMUTH & DME unusable:

015°-030°

FENIX NDB (LOMW) 355 CS N32°27.12' W85°02.52' 056° 6.5 NM to fld. 386/2W.

ILS 110.3 I-CSG Rwy 06. Class IB. LOM FENIX NDB.

CONEY N31°59.87' W83°51.71' NOTAM FILE MCN.

NDB (MHW) 400 OHY 103° 4.5 NM to Crisp Co-Cordele. 313/6W. NDB unmonitored 2200-1200Z‡.

JACKSONVILLE

L-18J

COOK CO (See ADEL on page 181)

CORDELE

CRISP CO-CORDELE (CKF)(KCKF) 2 NE UTC-5(-4DT) N31°59.33' W83°46.43'

310 B NOTAM FILE MCN

RWY 06-24: H5006X100 (ASPH) S-24

RWY 06: Tree.

RWY 24: Trees. Rgt tfc.

RWY 10-28: H5001X150 (ASPH) S-30, D-45 MIRL

RWY 10: ODALS. REIL. PAPI(P2L)—GA 3.0° TCH 42'.

RWY 28: REIL. PAPI(P2L)—GA 3.0° TCH 45'. Trees. Rgt tfc.

SERVICE: S4 FUEL 100LL, JET A+ LGT MIRL Rwy 10-28 and PAPI Rwys 10 and 28 preset on low ints dusk-0300Z‡, to incr ints and after 0300Z‡—CTAF. ACTIVATE ODALS Rwy 10 and REIL Rwy 10 and Rwy 28—CTAF.

AIRPORT REMARKS: Attended Nov-Mar Mon-Sat 1300-2200Z‡, Apr-Oct Mon-Sat 1300-2300Z‡.

AIRPORT MANAGER: 229-273-3124

WEATHER DATA SOURCES: AWOS-3PT 119.325 (229) 276-2669.

COMMUNICATIONS: CTAF/UNICOM 123.05

Ⓡ JAX CENTER APP/DEP CON 125.75

CLEARANCE DELIVERY PHONE: For CD ctc Jacksonville ARTCC at 904-845-1592.

RADIO AIDS TO NAVIGATION: NOTAM FILE MCN.

VIENNA (VL) (L) VORTAC 116.5 VNA Chan 112 N32°12.81'

W83°29.84' 225° 19.5 NM to fld. 300/1E.

DME unusable:

014°-024°

CONEY NDB (MHW) 400 OHY N31°59.87' W83°51.71' 103° 4.5 NM to fld. 313/6W. NDB unmonitored

2200-1200Z‡.

LOC 108.9 I-CKF Rwy 10. Class IA.

JACKSONVILLE

H-9B, 12F, L-18J

IAP

