

**MOBILE RGNL** (MOB)(KMOB) P (CG ARNG) 11 W UTC-6(-5DT) N30°41.49' W88°14.57'

NEW ORLEANS

219 B TPA—See Remarks AOE LRA Class I, ARFF Index B NOTAM FILE MOB

H-6K, 8G, L-21C, 22G

**RWY 15-33:** H8502X150 (ASPH-GRVD) S-75, D-162, 2S-175,

2D-270, 2D/2D2-550 PCN 55 F/D/W/U HIRL

**RWY 15:** MALSR. PAPI(P4L)—GA 3.0° TCH 50'. RVR-T

**RWY 33:** MALSR. PAPI(P4L)—GA 3.0° TCH 50'. RVR-T

**RWY 18-36:** H4376X150 (ASPH-GRVD) S-47, D-60, 2D-96

PCN 14 F/D/W/U MIRL

**RWY 18:** Trees.

**RWY 36:** Trees.

**SERVICE:** S4 FUEL 100LL, JET A, A+ OX2, 4 LGT When ATCT clsd  
actvt MALSR Rwy 15 & 33—CTAF. PAPI Rwy 15 & 33 opr consly.

HIRL Rwy 15-33 preset step 3 or hydr, based on wx conds.

**MILITARY—JASU** 4(NC-4 Equivalent) FUEL J4(Mil) A, A+

(C251-633-5000.) (NC-100LL) FLUID ADI LHOXRB OIL

O-128-133-148-156(Mil)

**AIRPORT REMARKS:** Attended continuously. Conds not mntd when ATCT  
clsd. Rwy 18-36 CLOSED 0400-1300Z± excp for emerg opns.

TPA—hel/sngl srs Cat I 800 ft AGL, 1300 ft AGL fixed wing acft, ovhd  
1800 ft AGL. Coast Guard; W apron, E apron. Rwy 18-36 not avbl

for sked acr opns with more than 9 psgr seats or unsked acr at least  
31 psgr seats. Ldg fee for non-scheduled coml acft over 65,000 lbs.

Flight Notification Service (ADCUS) avbl. User fee arpt.

**AIRPORT MANAGER:** 251-639-4680

**WEATHER DATA SOURCES:** ASOS 124.75 (251) 607-0469. LLWAS.

**COMMUNICATIONS:** CTAF 118.3 ATIS 124.75 UNICOM 122.95

RCO 122.2 (ANNISTON RADIO)

Ⓡ **MOBILE APP/DEP CON** 118.5 (320°-139°) 121.0 (140°-319°) (1200-0500Z±)

**HOUSTON CENTER APP/DEP CON** 127.65 (0500-1200Z±)

**MOBILE TOWER** 118.3 (1200-0500Z±) **GND CON** 121.9 **CLNC DEL** 119.85

**CLEARANCE DELIVERY PHONE:** For CD if una to ctc on FSS freq, ctc Houston ARTCC at 281-230-5622.

**AIRSPACE:** CLASS C svc ctc **APP CON** svc 1200-0500Z±; other times CLASS E.

**RADIO AIDS TO NAVIGATION:** NOTAM FILE ANB.

**SEMMEs (VH) (H) VORTACW** 115.3 SJJ Chan 100 N30°43.56' W88°21.56' 104° 6.4 NM to fld. 190/5E.

VOR unusable:

010°-022° byd 40 NM

023°-033°

045°-075° byd 40 NM

076°-088° byd 40 NM blo 3,100'

076°-088° byd 49 NM

097°-198° byd 40 NM

199°-209°

210°-228° byd 40 NM

211°-221° byd 30 NM blo 6,000'

229°-249° byd 40 NM blo 18,000'

233°-243° byd 22 NM blo 5,000'

250°-254° byd 40 NM

255°-270° byd 40 NM blo 18,000'

303°-329° byd 40 NM

310°-320° byd 22 NM blo 8,000'

330°-340°

355°-015° byd 20 blo 4,000'

358°-004° byd 40 NM

TACAN AZIMUTH unusable:

120°-130°

268°-274° byd 30 NM blo 5,000'

DME unusable:

268°-274° byd 30 NM blo 5,000'

**WISLE NDB (HW)** 248 MOB N30°45.64' W88°18.19' 144° 5.2 NM to fld. 210/1W. NOTAM FILE MOB. NDB

unmonitored.

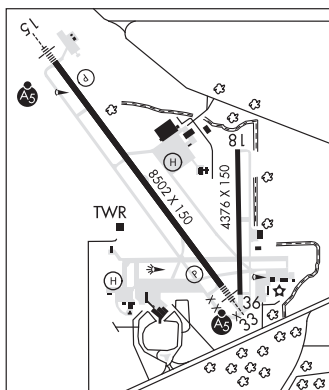
NDB unusable:

Byd 25 NM

**ILS** 109.9 I-MOB Rwy 15. Class IIE.

**ILS** 111.5 I-ATE Rwy 33. Class IA.

**ASR** (1200-0500Z±)



**HELIPAD H1:** H100X100 (ASPH)

**HELIPORT REMARKS:** Helipad H1 mil use only helipad lctd at USCG apron.