

**SONOMA SKYPARK** (ØQ9) 3 SE UTC-8(-7DT) N38°15.45' W122°26.05'

SAN FRANCISCO

20 NOTAM FILE OAK

**RWY 08-26:** H2480X40 (ASPH) S-8

**RWY 08:** Thld dsplcd 140'. Trees. Rgt tfc.

**RWY 26:** Thld dsplcd 237'. Trees.

**SERVICE:** S4 FUEL 100LL

**NOISE:** Noise sensitive area east end of Rwy 08-26. 1000 ft min AGL over all property in imt vcnty of the arpt. For noise abatement info call amgr 707-996-2100 or airport website.

**AIRPORT REMARKS:** Attended 1700-0100Z. Rotor-wing, tbit, ultralights plus acft over 8500 lbs gwt are prohibited. Night opns prohibited. Perform pre-departure runup west end. Early morning opn of hot air blns. Rwy 26 is calm wind rwy. Rwy 08 for arrival and dep only, no touch and go ldg or practice apchs. Straight-in apchs NA. Ngtly tie-down fee.

**AIRPORT MANAGER:** 707-996-2100

**COMMUNICATIONS:** CTAF/UNICOM 122.8

**CLEARANCE DELIVERY PHONE:** For CD ctc Oakland ARTCC at 510-745-3380.

**SONOMA VALLEY** (See SCHELLVILLE/SONOMA on page 237)

## SOUTH LAKE TAHOE

**LAKE TAHOE** (TVL)(KTVL) 3 SW UTC-8(-7DT) N38°53.63' W119°59.72'

SAN FRANCISCO

6268 B TPA—See Remarks NOTAM FILE TVL

H-3B, L-9A

**RWY 18-36:** H8541X100 (ASPH-GRVD) S-70, D-125, 2S-159, 2D-210 MIRL

IAP, AD

**RWY 18:** MALSf. PAPI(P4L)—GA 3.0° TCH 48'. Thld dsplcd 800'.  
Brush.

**RWY 36:** REIL. Thld dsplcd 2033'. Trees. Rgt tfc.

**RUNWAY DECLARED DISTANCE INFORMATION**

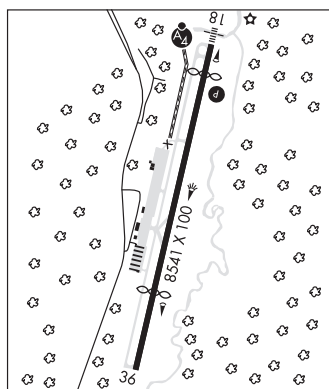
**RWY 18:** TORA-8541 TODA-8541 ASDA-7817 LDA-7017

**RWY 36:** TORA-8541 TODA-8541 ASDA-7741 LDA-5708

**SERVICE:** S2 FUEL 100LL, JET A 0X 1, 3 LGT ACTIVATE MALSf Rwy 18; PAPI Rwy 18, MIRL Rwy 18-36—CTAF.

**NOISE:** Access noise restrictions: max 80 DBA departure, 84 DBA arrival (Transport—85 DBA), maximum 77.1 DBA night limit. Noise abatement, DEP RWY 36 HDG 1 mile, left 320 DEG to shoreline. For noise abatement info call 530-542-6182.

**AIRPORT REMARKS:** Attended 1500-0000Z. Arpt conditions not monitored 0000-1500Z. Arpt conds not mnt Sat-Sun. Birds and waterfowl invof arpt. After winter storms Rwy 18-36 opens before all taxiways are clear. Arpt surrounded on east, south and west by rapidly rising terrain. Tfc advisories and sequencing in the tfc pattern are based on position reports received from pilots in these areas. Adverse weather effects magnified by mountains. Avoid Desolation Wilderness west of arpt. Preferred arrival Rwy 18. Preferred departure Rwy 36. For large and high performance acft dep Rwy 18, right downwind dep is recommended. Recreational airborne activity along southern lakeshore. Paragliders and motorized prchts opr from rwy sfc. Cold temperature airport. Altitude correction required at or below -13C. TPA 7500(1232) small acft, 8000(1732) transport/high performance aircraft. Twy H clsd perm.



**AIRPORT MANAGER:** 530-542-6031

**WEATHER DATA SOURCES:** ASOS 124.725 (530) 541-5739. Unrelbl wind spd and dir info. LAWRS.

**COMMUNICATIONS:** CTAF/UNICOM 122.85

SQUAW VALLEY RCO 122.5 (RENO RADIO)

Ⓡ OAKLAND CENTER APP/DEP CON 127.95 316.1

CLNC DEL 134.3

**AIRSPACE:** CLASS E.

**RADIO AIDS TO NAVIGATION:** NOTAM FILE TVL.

**SQUAW VALLEY (VL) (DH) VORW/DME** 113.2 SWR Chan 79 N39°10.82' W120°16.18' 127° 21.4 NM to fld.  
8850/16E.

VOR unusable:

036°-048° byd 40 NM

112°-124° byd 40 NM blo 14,000'

112°-124° byd 53 NM

**LDA/DME** 108.9 I-TVL Chan 26 Rwy 18. LDA/DME Rwy 18 unmonitored. LOC front unusable byd 15° left and 15° right of course. LOC front unusable within 4.0 DME.

**SOUTHARD FLD** (See BIEBER on page 102)

**SOUTHERN CALIFORNIA LOGISTICS** (See VICTORVILLE on page 258)