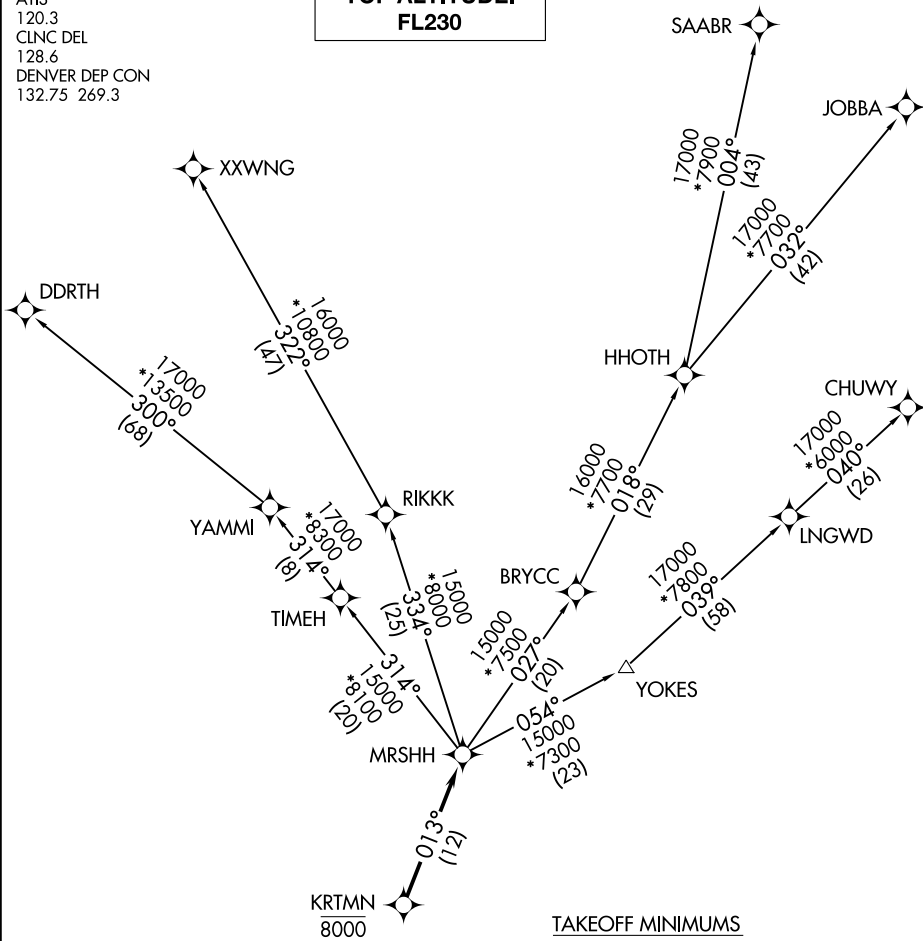


ATIS
120.3
CLNC DEL
128.6
DENVER DEP CON
132.75 269.3

**TOP ALTITUDE:
FL230**



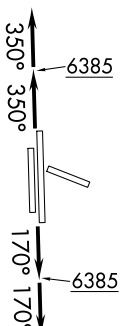
SW-1, 14 JUL 2022 to 11 AUG 2022

SW-1, 14 JUL 2022 to 11 AUG 2022

TAKEOFF MINIMUMS

- Rwys 10, 28: NA.
- Rwy 17L: Standard with minimum climb of 257' per NM to 8000.
- Rwy 17R: Standard with minimum climb of 372' per NM to 8000.
- Rwys 35L/R: Standard.

- NOTE: DME/DME/IRU or GPS required.
- NOTE: RNAV 1.
- NOTE: Turbojets only.
- NOTE: RADAR required.



(NARRATIVE ON FOLLOWING PAGE)

NOTE: Chart not to scale.