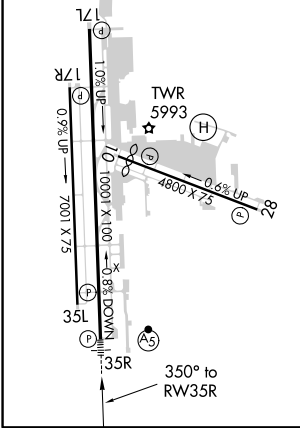
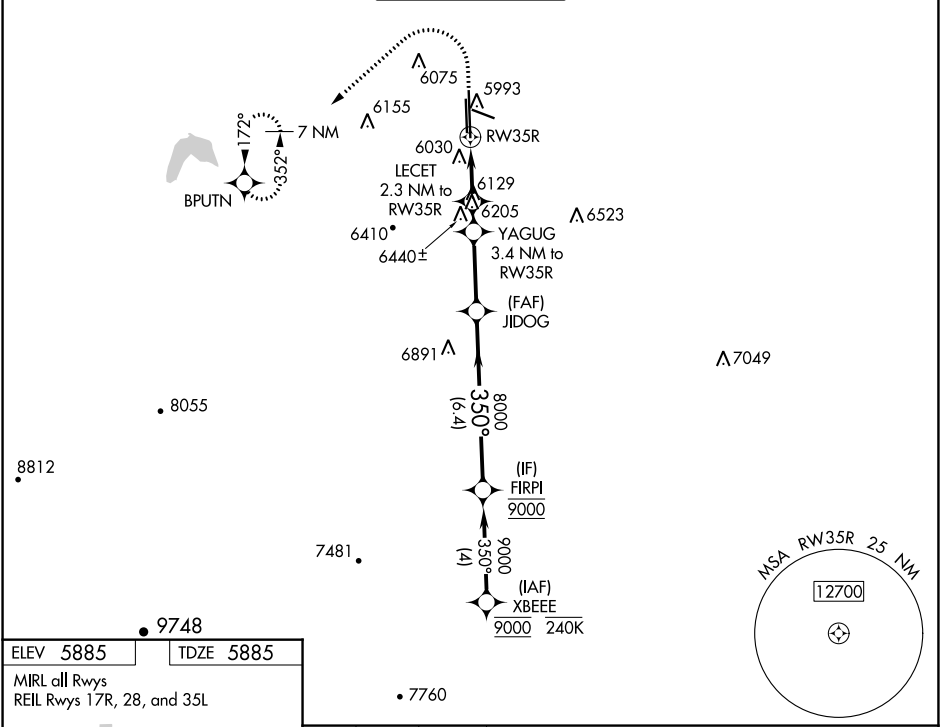


WAAS CH <b>40339</b> <b>W35A</b>	APP CRS <b>350°</b>	Rwy Idg TDZE Apt Elev	<b>10001</b> <b>5885</b> <b>5885</b>
--	------------------------	-----------------------------	--

# RNAV (GPS) RWY 35R

CENTENNIAL (APA)

RNP APCH.		MALSR		MISSED APPROACH: (Do not exceed 240K until BPUTN) Climb to 8200 then climbing left turn to 9600 direct BPUTN and hold.	
<p><b>▼</b> Circling Rwy 35L NA at night. For uncompensated Baro-VNAV systems, LNAV/VNAV NA below -21°C or above 54°C. For inop ALS, increase LNAV Cats C/D visibility to 1 3/8 SM.</p> <p><b>▲</b></p>		<p>ATIS <b>120.3</b></p>		<p>DENVER APP CON <b>132.75 269.3</b></p>	
<p>CENTENNIAL TOWER <b>118.9</b></p>		<p>GND CON <b>121.8</b></p>		<p>CLNC DEL <b>128.6</b></p>	



8200	9600	BPUTN	YAGUG	JIDOG	FIRPI	
			3.4 NM to RW35R	8000	9000	
			2.3 NM to RW35R			
			1.4 NM to RW35R			
				350°		
				8000		
					GP 3.10°	
					TCH 51	
			1.4 NM	0.9 NM	1.1 NM	
				2.9 NM	6.4 NM	
CATEGORY	A		B		C	D
LPV	DA		6085-1/2		200 (200-1/2)	
LNAV/VNAV	DA		6324-3/4		439 (500-3/4)	
LNAV MDA	6380-1/2		495 (500-1/2)		6380-1 495 (500-1)	
<b>C</b> CIRCLING	6400-1 515 (600-1)		6540-1 655 (700-1)		6740-2 1/2 855 (900-2 1/2)	
					6760-2 3/4 875 (900-2 3/4)	

SW-1, 14 JUL 2022 to 11 AUG 2022

SW-1, 14 JUL 2022 to 11 AUG 2022