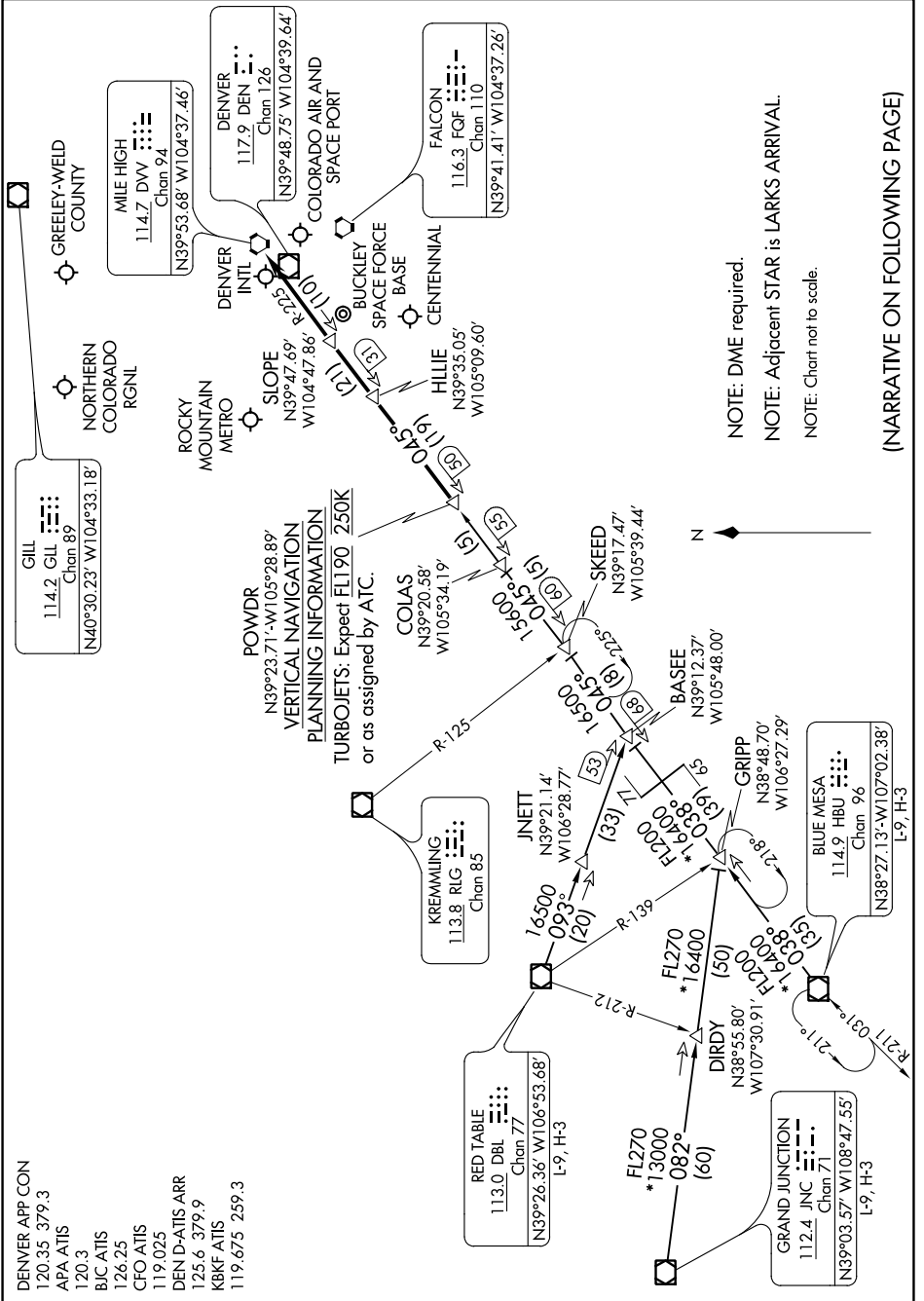


POWDR ONE ARRIVAL

AL-9077 (FAA)

DENVER, COLORADO

SW-1, 14 JUL 2022 to 11 AUG 2022



(NARRATIVE ON FOLLOWING PAGE)

POWDR ONE ARRIVAL

DENVER, COLORADO

SW-1, 14 JUL 2022 to 11 AUG 2022

- DENVER APP CON 120.35 379.3
- APA ATIS 120.3
- B/C ATIS 126.25
- CFO ATIS 119.025
- DEN D-ATIS ARR 125.6 379.9
- KBKF ATIS 119.675 259.3

RED TABLE
113.0 DBL
Chan 77
N39°26.36' W106°53.68'
L-9, H-3

GRAND JUNCTION
112.4 JNC
Chan 71
N39°03.57' W108°47.55'
L-9, H-3

KREMMLING
113.8 RIG
Chan 85

BLUE MESA
114.9 HBU
Chan 96
N38°27.13' W107°02.38'
L-9, H-3

GRIPP
N38°48.70'
W106°27.29'

BASEE
N39°12.37'
W105°48.00'

SKPEED
N39°17.47'
W105°39.44'

COILAS
N39°20.58'
W105°34.19'

POWDR
N39°23.71' W105°28.89'
VERTICAL NAVIGATION
PLANNING INFORMATION
TURBOJETS: Expect FL190 250K
or as assigned by ATC.

MILE HIGH
114.7 DVV
Chan 94
N39°53.68' W104°37.46'

FALCON
116.3 FQR
Chan 110
N39°41.41' W104°37.26'

DENVER
117.9 DEN
Chan 126
N39°48.75' W104°39.64'

NOTE: DME required.
NOTE: Adjacent STAR is LARKS ARRIVAL.
NOTE: Chart not to scale.