

AWOS-3
118.375
CTAF
122.8
MIAMI DEP CON
125.5 354.1

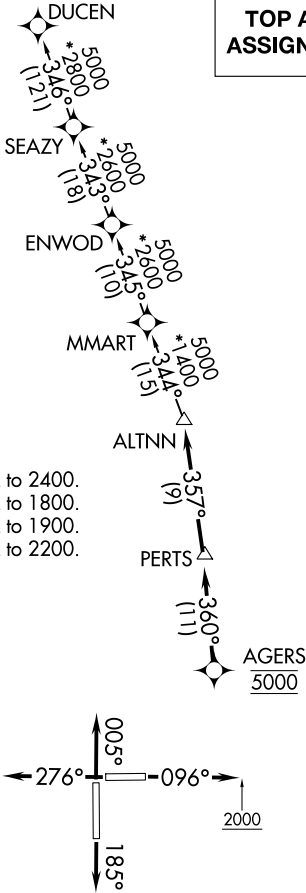
RNAV 1 - DME/DME/IRU or GPS.
RADAR required.

TOP ALTITUDE:
ASSIGNED BY ATC

TAKEOFF MINIMUMS

- Rwy 10: Standard with minimum climb of 500' per NM to 2400.
Rwy 18: Standard with minimum climb of 500' per NM to 1800.
Rwy 28: Standard with minimum climb of 500' per NM to 1900.
Rwy 36: Standard with minimum climb of 500' per NM to 2200.

NOTE: Jet aircraft only.
NOTE: Accelerate to 250K, if unable, advise ATC.



NOTE: Chart not to scale.



DEPARTURE ROUTE DESCRIPTION

- TAKEOFF RUNWAY 10:** Climb on heading 096° to 2000, then as assigned for RADAR vectors to cross AGERS at 5000, thence. . . .
- TAKEOFF RUNWAY 18:** Climb on heading 185° or as assigned for RADAR vectors to cross AGERS at 5000, thence. . . .
- TAKEOFF RUNWAY 28:** Climb on heading 276° or as assigned for RADAR vectors to cross AGERS at 5000, thence. . . .
- TAKEOFF RUNWAY 36:** Climb on heading 005° or as assigned for RADAR vectors to cross AGERS at 5000, thence. . . .
- on track 360° to PERTS, then on track 357° to ALTNN, then on assigned transition, maintain ATC assigned altitude, expect filed altitude within 10 minutes after departure.

DUCEN TRANSITION (ALTNN1.DUCEN)