

DORRL ONE DEPARTURE (RNAV)

AWOS-3
118.375
MIAMI DEP CON
125.5 354.1

**TOP ALTITUDE:
ASSIGNED BY ATC**

RNAV 1 - DME/DME/IRU or GPS.

RADAR required.

TAKEOFF MINIMUMS

Rwy 10: Standard with minimum climb of 500' per NM to 2500.
Rwy 18, 28: Standard with minimum climb of 500' per NM to 1900.
Rwy 36: Standard with minimum climb of 500' per NM to 2200.

DEPARTURE ROUTE DESCRIPTION

TAKEOFF RUNWAY 10: Climb on heading 096° to 2000, or as assigned by ATC for RADAR vectors to cross LIFRR at 4000, thence. . . .

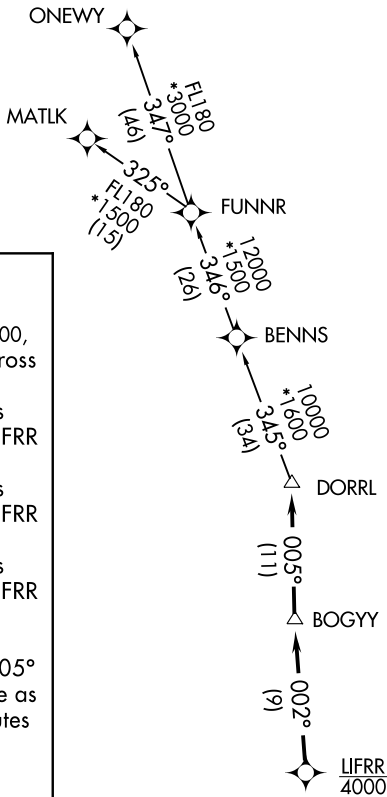
TAKEOFF RUNWAY 18: Climb on heading 185° or as assigned by ATC for RADAR vectors to cross LIFRR at 4000, thence. . . .

TAKEOFF RUNWAY 28: Climb on heading 276° or as assigned by ATC for RADAR vectors to cross LIFRR at 4000, thence. . . .

TAKEOFF RUNWAY 36: Climb on heading 005° or as assigned by ATC for RADAR vectors to cross LIFRR at 4000, thence. . . .

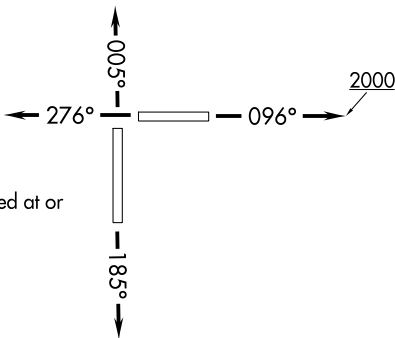
. . . .on track 002° to BOGYG, then on track 005° to DORRL then on (transition), maintain altitude as assigned by ATC, expect filed altitude 10 minutes after departure.

MATLK TRANSITION (DORRL.MATLK)
ONEWY TRANSITION (DORRL.ONEWY)



SE-3, 14 JUL 2022 to 11 AUG 2022

SE-3, 14 JUL 2022 to 11 AUG 2022



NOTE: For turbo-props/props filed at or above 13000.

NOTE: Chart not to scale.