

# FLMGO ONE DEPARTURE (RNAV)

HOMESTEAD, FLORIDA

RNAV 1 - DME/DME/IRU or GPS.

RADAR required.

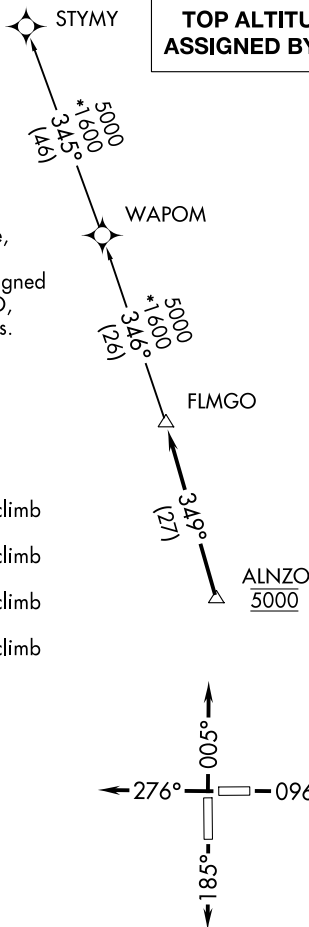
**TOP ALTITUDE:  
ASSIGNED BY ATC**

AWOS-3  
118.375  
CTAF  
122.8  
MIAMI DEP CON  
125.5 354.1

- NOTE: Jet aircraft only.
- NOTE: Accelerate to 250K, if unable, advise ATC.
- NOTE: WAPOM Transition ATC assigned except aircraft landing: MCO, DAB, and MLB terminal areas.

### TAKEOFF MINIMUMS

- Rwy 10: Standard with minimum climb of 500' per NM to 2400.
- Rwy 18: Standard with minimum climb of 500' per NM to 1800.
- Rwy 28: Standard with minimum climb of 500' per NM to 1900.
- Rwy 36: Standard with minimum climb of 500' per NM to 2200.



NOTE: Chart not to scale.

### DEPARTURE ROUTE DESCRIPTION

- TAKEOFF RUNWAY 10: Climb on heading 096° to 2000, then as assigned for RADAR vectors to cross ALNZO at 5000, thence. . . .
- TAKEOFF RUNWAY 18: Climb on heading 185° or as assigned for RADAR vectors to cross ALNZO at 5000, thence. . . .
- TAKEOFF RUNWAY 28: Climb on heading 276° or as assigned for RADAR vectors to cross ALNZO at 5000, thence. . . .
- TAKEOFF RUNWAY 36: Climb on heading 005° or as assigned for RADAR vectors to cross ALNZO at 5000, thence. . . .

. . . on track 349° to FLMGO, then on assigned transition. Maintain ATC assigned altitude. Expect filed altitude within 10 minutes after departure.

- STYMY TRANSITION (FLMGO1.STYMY)
- WAPOM TRANSITION (FLMGO1.WAPOM)