

TOP ALTITUDE:
ASSIGNED BY ATC

RNAV 1 - DME/DME/IRU or GPS.

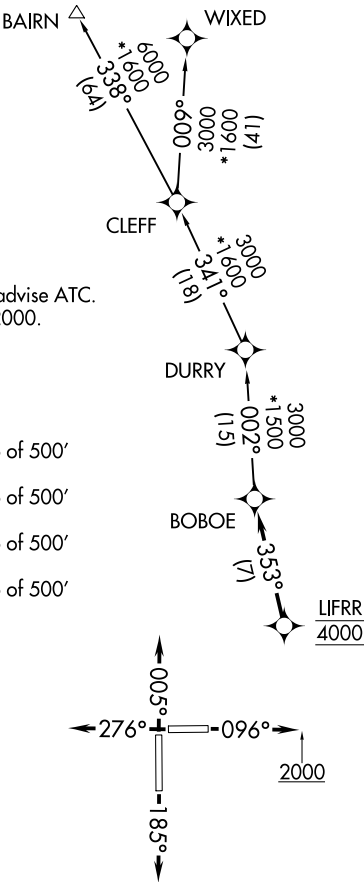
RADAR required.

AWOS-3
118.375
CTAF
122.8
MIAMI DEP CON
125.5 354.1

NOTE: Jet aircraft only.
NOTE: Accelerate to 250K, if unable, advise ATC.
NOTE: For aircraft filed at or below 12000.

TAKEOFF MINIMUMS

- Rwy 10: Standard with minimum climb of 500' per NM to 2400.
- Rwy 18: Standard with minimum climb of 500' per NM to 1800.
- Rwy 28: Standard with minimum climb of 500' per NM to 1900.
- Rwy 36: Standard with minimum climb of 500' per NM to 2200.



NOTE: Chart not to scale.



DEPARTURE ROUTE DESCRIPTION

TAKEOFF RUNWAY 10: Climb on heading 096° to 2000, then as assigned by ATC for vectors to cross LIFRR at 4000, thence. . .

TAKEOFF RUNWAY 18: Climb on heading 185° or as assigned by ATC for vectors to cross LIFRR at 4000, thence. . .

TAKEOFF RUNWAY 28: Climb on heading 276° or as assigned by ATC for vectors to cross LIFRR at 4000, thence. . .

TAKEOFF RUNWAY 36: Climb on heading 005° or as assigned by ATC for vectors to cross LIFRR at 4000, thence. . .

. . .on track 353° to BOBOE, then on assigned transition, maintain ATC assigned altitude, expect clearance to filed altitude within 10 minutes after departure.

BAIRN TRANSITION (LIFRR1.BAIRN)
WIXED TRANSITION (LIFRR1.WIXED)