

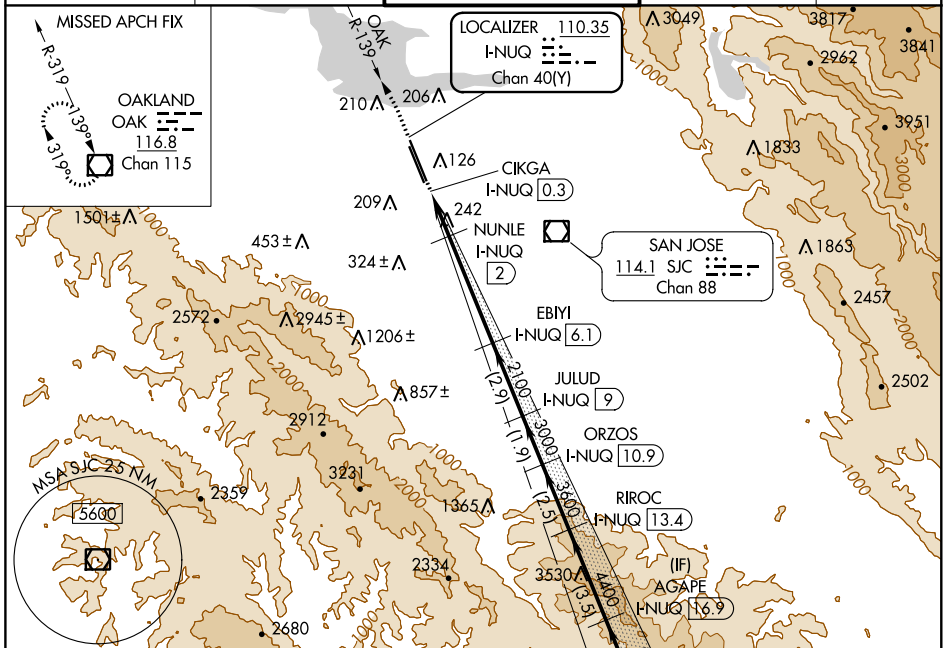
LOC/DME I-NUQ 110.35 Chan 40 (Y)	APP CRS 322°	Rwy ldg 9006 TDZE 31 Apt Elev 37
---	------------------------	---

ILS or LOC RWY 32R

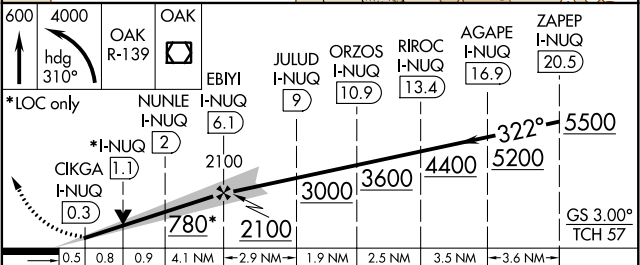
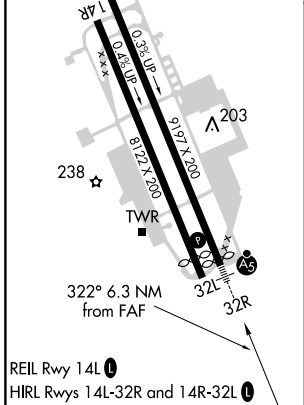
MOFFETT FEDERAL AIRFIELD (NUQ)

DME required. RADAR required for procedure entry.	MALSR 	MISSED APPROACH: Climb to 600 then climbing left turn to 4000 on heading 310° and on OAK VOR/DME R-139 to OAK VOR/DME and hold.
 For inop ALS, increase S-ILS 32R Cat E visibility to 3/4 SM and S-LOC 32R Cat C/D/E to 1 3/8 SM.		

ATIS 124.175 283.0	NORCAL APP CON 120.1 290.25	MOFFETT TOWER ★ 119.550 (CTAF) 259.65	GND CON 121.85 278.95	CLNC DEL 296.75
------------------------------	---------------------------------------	---	---------------------------------	---------------------------



ELEV 37	TDZE 31
---------	---------



CATEGORY	A	B	C	D	E
S-ILS 32R	231-1/2 200 (200-1/2)				
S-LOC 32R	500-1/2	469 (500-1/2)	500-1 469 (500-1)		
CIRCLING	540-1 503 (600-1)	600-1 563 (600-1)	620-1 1/2 583 (600-1 1/2)	780-2 1/2 743 (800-2 1/2)	940-3 903 (1000-3)

SW-2, 11 AUG 2022 to 08 SEP 2022

SW-2, 11 AUG 2022 to 08 SEP 2022