

SOUTHLAND THREE DEPARTURE

AL-410 (FAA)

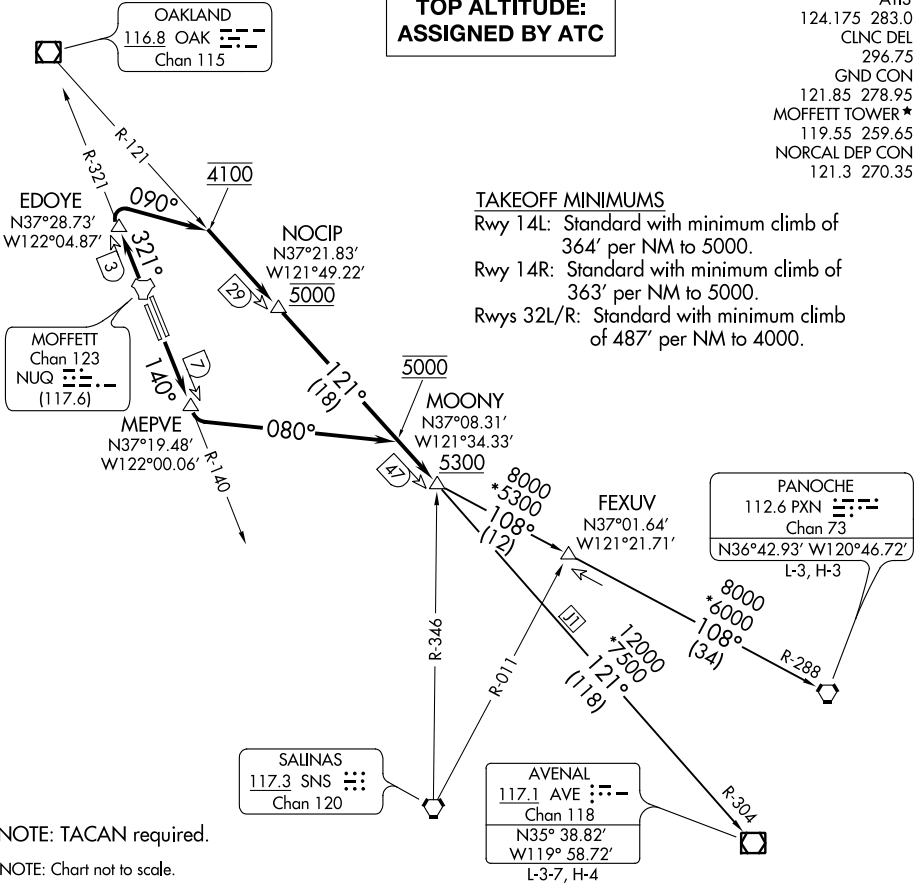
MOFFETT FEDERAL AIRFIELD (NUQ)
MOUNTAIN VIEW, CALIFORNIA

**TOP ALTITUDE:
ASSIGNED BY ATC**

ATIS	124.175	283.0
CLNC DEL		
GND CON	296.75	
GND CON		
121.85	278.95	
MOFFETT TOWER *		
119.55	259.65	
NORCAL DEP CON		
121.3	270.35	

TAKEOFF MINIMUMS

Rwy 14L: Standard with minimum climb of 364' per NM to 5000.
 Rwy 14R: Standard with minimum climb of 363' per NM to 5000.
 Rwys 32L/R: Standard with minimum climb of 487' per NM to 4000.



SW-2, 11 AUG 2022 to 08 SEP 2022

SW-2, 11 AUG 2022 to 08 SEP 2022

NOTE: TACAN required.

NOTE: Chart not to scale.

DEPARTURE ROUTE DESCRIPTION

TAKEOFF RUNWAYS 14L/R: Climb on NUQ R-140 to MEPVE/NUQ 7 DME, then climbing left turn on heading 080° to intercept OAK R-121 at 5000, then on OAK R-121 to cross MOONY INT at or above 5300, thence

TAKEOFF RUNWAYS 32L/R: Climb on NUQ R-321 to EDOYE/NUQ 3 DME, then climbing right turn on heading 090° to intercept OAK R-121 at 4100, then on OAK R-121 to cross NOCIP/OAK 29 DME at 5000, then on OAK R-121 to cross MOONY INT at or above 5300, thence

. . . . on (transition), maintain ATC assigned altitude.

AVENAL TRANSITION (SOLN3.AVE): From over MOONY INT on OAK R-121 and AVE R-304 to AVE VOR/DME.

PANOCHÉ TRANSITION (SOLN3.PXN): From over MOONY INT on PXN R-288 to PXN VORTAC.

SOUTHLAND THREE DEPARTURE

MOUNTAIN VIEW, CALIFORNIA
MOFFETT FEDERAL AIRFIELD (NUQ)