

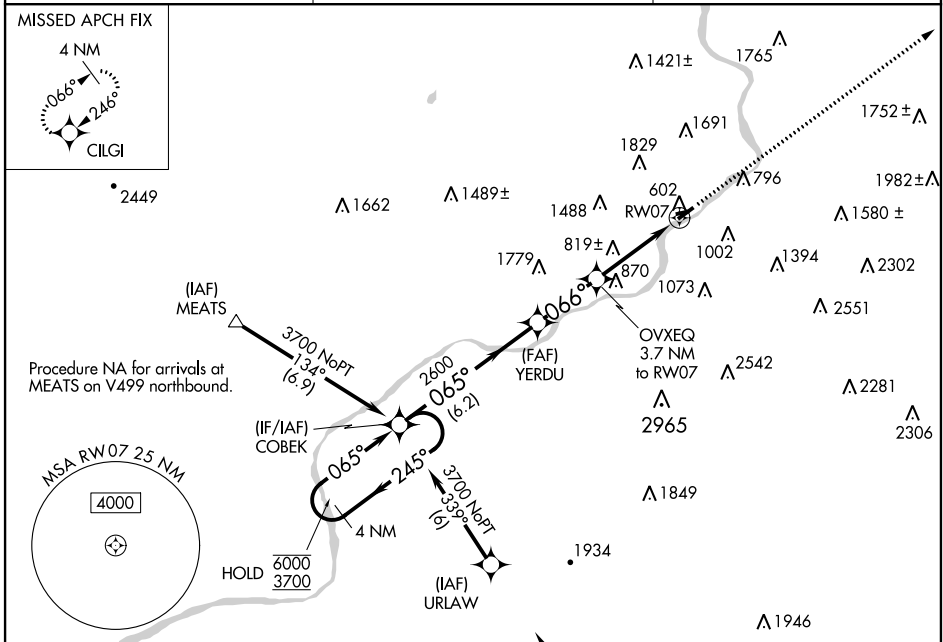
WAAS CH 86624 W07A	APP CRS 066°	Rwy Idg TDZE Apt Elev	3375 543 544
--	------------------------	-----------------------------	---

RNAV (GPS) RWY 7

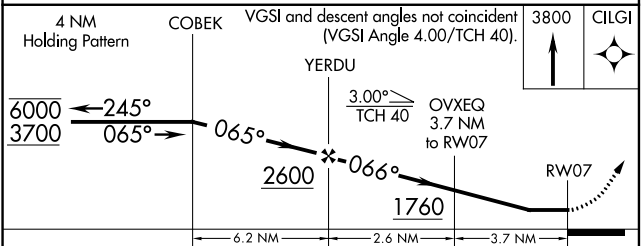
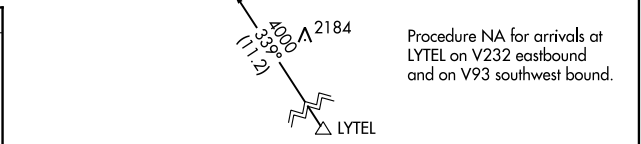
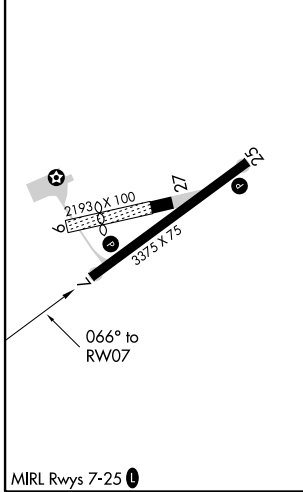
WILKES-BARRE WYOMING VALLEY (WBW)

RNP APCH.	MISSED APPROACH: Climb to 3800 direct CILGI and hold.
Rwy 7 helicopter visibility reduction below 1 SM NA. Use Wilkes-Barre/Scranton altimeter setting. Circling NA NW of Rwy 7-25. Procedure NA at night.	

AVP ASOS 111.6	WILKES-BARRE APP CON 126.3 256.7	UNICOM 122.8 (CTAF) 0
--------------------------	--	---------------------------------



ELEV 544	TDZE 543
----------	----------



CATEGORY	A	B	C	D
LP MDA	1160-1	617 (700-1)		NA
LNAV MDA	1300-1 757 (800-1)	1300-1¼ 757 (800-1¼)		NA
CIRCLING	1320-1 776 (800-1)	1380-1¼ 836 (900-1¼)		NA

NE-4, 11 AUG 2022 to 08 SEP 2022

NE-4, 11 AUG 2022 to 08 SEP 2022