

WAAS CH 70622 W14A	APP CRS 143°	Rwy Idg TDZE Apt Elev	5054 712 716
----------------------------------------	------------------------	-----------------------------	-----------------------------------------

RNAV (GPS) RWY 14

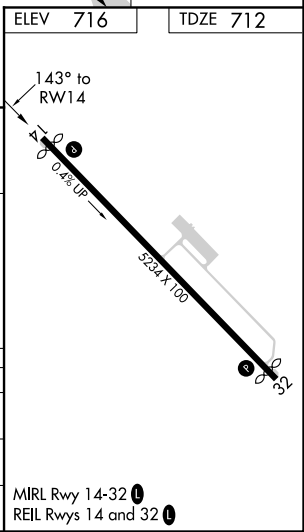
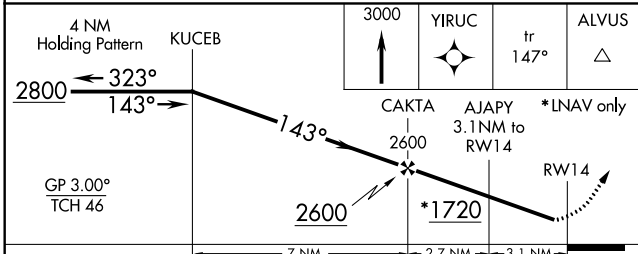
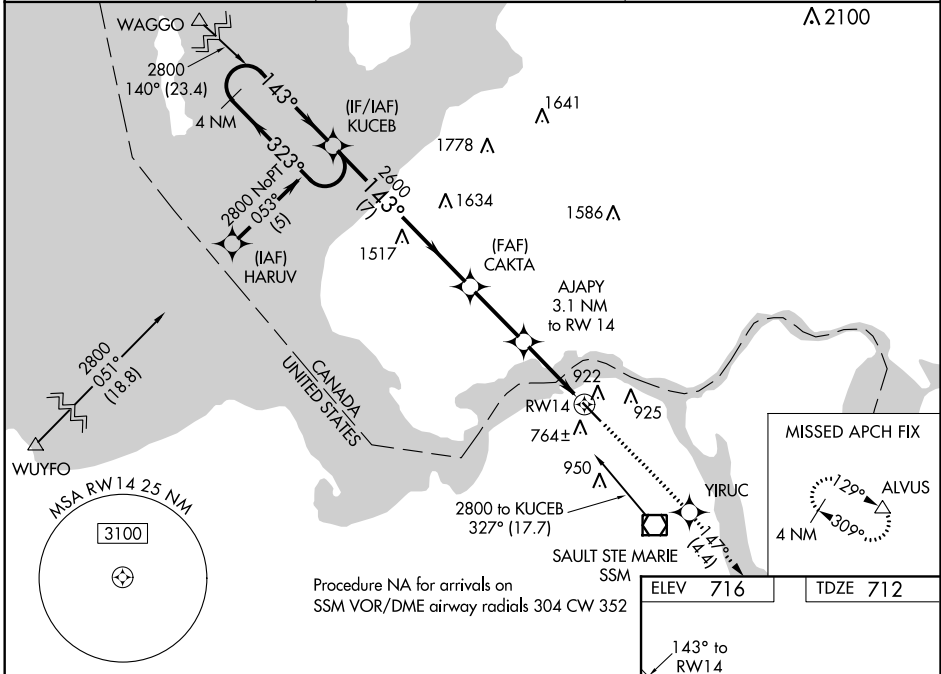
SAULT STE MARIE MUNI/SANDERSON FLD (A.NJ)

RNP APCH.

▽ For uncompensated Baro-VNAV systems, LNAV/VNAV NA below -16°C or above 54°C.
▲ Rwy 14 helicopter visibility reduction below 3/4 SM NA. When local altimeter setting not received, use Chippewa County Intl altimeter setting and increase all DA 45 feet and all MDA 60 feet. Increase LNAV/VNAV all Cats visibilities to 1 1/4 mile and LNAV Cat C visibility to 1 1/8 mile.

MISSED APPROACH:
 Climb to 3000 direct YIRUC and on track 147° to ALVUS and hold.

ASOS 118.375	TORONTO CENTER 132.65 344.5	UNICOM 122.7 (CTAF) 0
------------------------	---------------------------------------	---------------------------------



CATEGORY	A	B	C	D
LPV DA	962-1	250 (300-1)		NA
LNAV/VNAV DA	1137-1 3/8	425 (500-1 3/8)		NA
LNAV MDA	1240-1	528 (600-1)	1240-1 5/8 528 (600-1 5/8)	NA

EC-1, 11 AUG 2022 to 08 SEP 2022

EC-1, 11 AUG 2022 to 08 SEP 2022