

REDSTONE ARSENAL, ALABAMA

RNAV (GPS) RWY 17

WAAS CH 45638 W17A	APCH CRS 173°	Rwy ldg TDZE 685 Arprt Elev 685
--------------------------	------------------	--

AL-703 (USA)

REDSTONE AAF (KHUA)

⚠ * When ALS inop, increase CAT E vis to 1 1/2 miles.
 ** When ALS inop, increase CAT CDE vis to 1 3/8 miles.
 *** Circling not authorized E of Rwy 17-35.

MALSR MISSED APPROACH: Climb to 3000 direct FASOV and hold.

ATIS 120.65	HUNTSVILLE APP CON/DEP CON 125.6 354.1	TOWER* 126.95 (CTAF) 290.275	PAR
----------------	---	--	-----

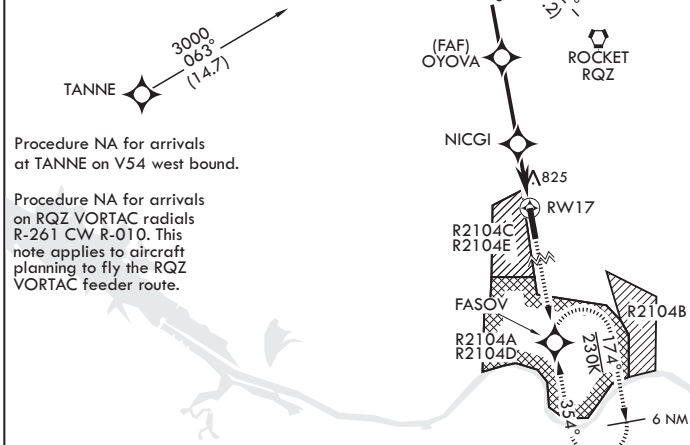
DME/DME RNP -0.3 NA

Visibility reduction by helicopters below 1 SM NA.

For uncompensated Baro-VNAV systems, LNAV/VNAV NA below -9°C (16°F) or above 54°C (130°F).

INOPERATIVE TABLE does not apply to LPV all CAT and LNAV CAT AB.

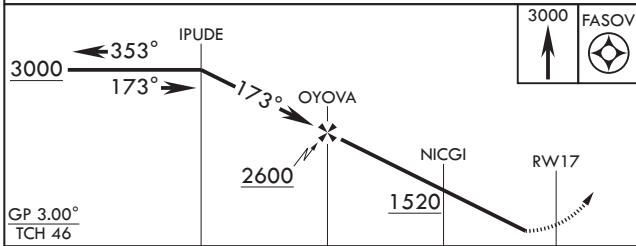
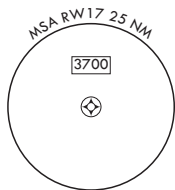
1716



Procedure NA for arrivals at TANNE on V54 west bound.

Procedure NA for arrivals on RQZ VORTAC radials R-261 CW R-010. This note applies to aircraft planning to fly the RQZ VORTAC feeder route.

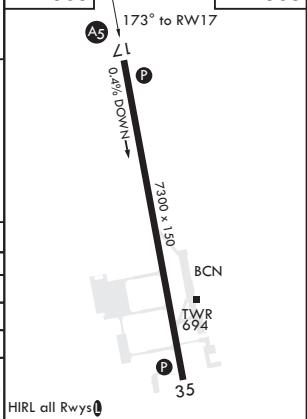
2673



FASOV ELEV 685 TDZE 685

GP 3.00° TCH 46

CATEGORY	A	B	C	D	E
LPV DA	935-1		250	(300-1)	
LNAV/VNAV DA*	1113-1		428	(500-1)	
LNAV MDA**	1180-1		495	(500-1)	
C CIRCLING***	1200-1 515 (600-1)	1240-1 555 (600-1)	1480-2¼ 795 (800-2¼)	1740-3 1055 (1100-3)	



HIRL all Rwy's

REDSTONE ARSENAL, ALABAMA

34°41'N - 86°41'W

REDSTONE AAF (KHUA)

Amdt 1A 03JAN19

RNAV (GPS) RWY 17

SE-4, 11 AUG 2022 to 08 SEP 2022

SE-4, 11 AUG 2022 to 08 SEP 2022