

WAAS CH 82023 W10A	APP CRS 103°	Rwy Idg 5001 TDZE 2502 Apt Elev 2504
--	------------------------	---

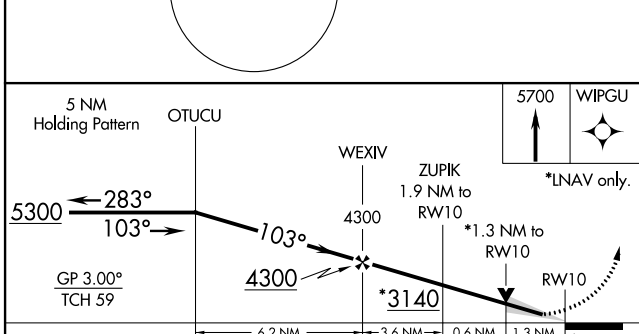
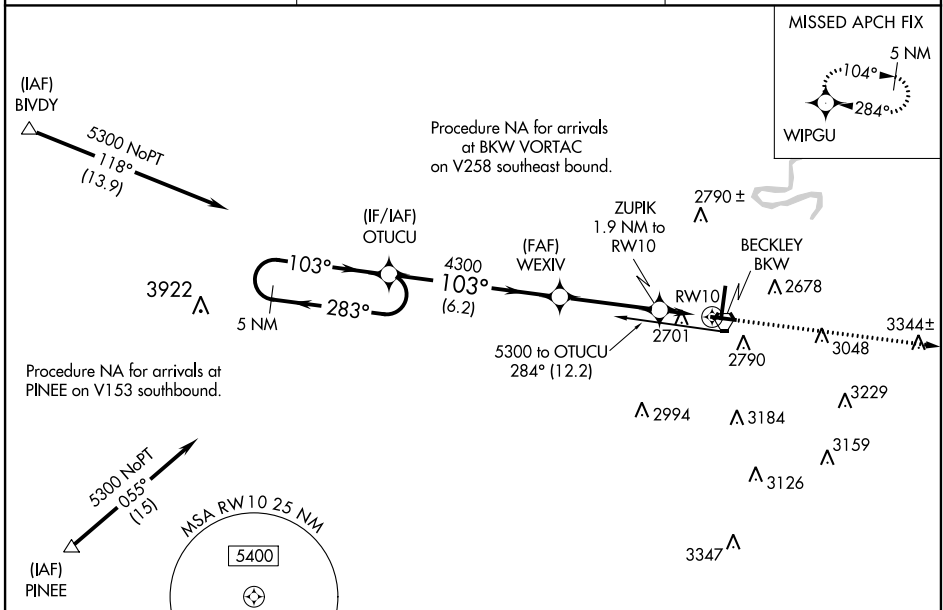
RNAV (GPS) RWY 10

RALEIGH COUNTY MEML (BKW)

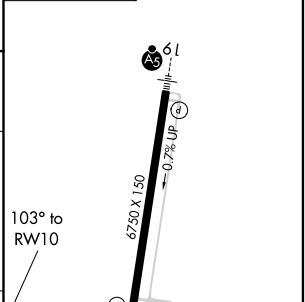
⚠ For uncompensated Baro-VNAV systems, LNAV/VNAV NA below -19°C (-2°F) or above 28°C (82°F).
⚠ DME/DME RNP-0.3 NA. VDP and Baro-VNAV NA when using Bluefield altimeter setting. When local altimeter not received, use Bluefield altimeter setting and increase all DA 118 feet and all MDA 120 feet; increase LPV all Cats visibility ¼ SM, LNAV/VNAV all Cats visibility ½ SM, LNAV Cat C/D visibility ¾ SM, and Circling Cat C visibility ¼ SM.

MISSED APPROACH:
Climb to 5700 direct WIPGU and hold.

ASOS 121.55	CHARLESTON APP CON 125.4 269,125	UNICOM 123.0 (CTAF) 0
-----------------------	--	---------------------------------



ELEV 2504	D	TDZE 2502
-----------	----------	-----------



CATEGORY	A	B	C	D
LPV DA		2702-¾	200 (200-¾)	
LNAV/VNAV DA		3016-1¾	514 (500-1¾)	
LNAV MDA	2960-1	458 (500-1)	2960-1¾	458 (500-1¾)
C CIRCLING	3120-1 616 (700-1)	3180-1 676 (700-1)	3320-2½ 816 (900-2½)	3500-3 996 (1000-3)

HIRL Rwy 1-19 **0**
 MRL Rwy 10-28 **0**
 REL Rwy 1, 10, and 28 **0**

NE-4, 11 AUG 2022 to 08 SEP 2022

NE-4, 11 AUG 2022 to 08 SEP 2022