

VOR/DME PRX 113.6 Chan 83	APP CRS 350°	Rwy Idg TDZE Apt Elev	6002 532 548
---	------------------------	-----------------------------	---

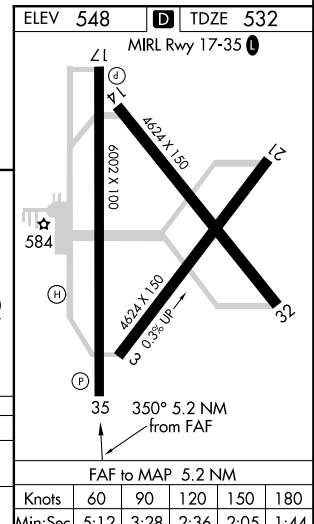
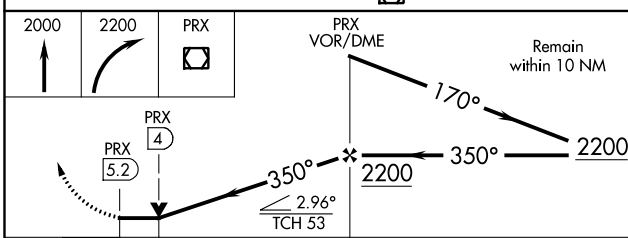
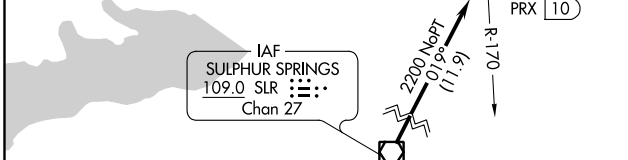
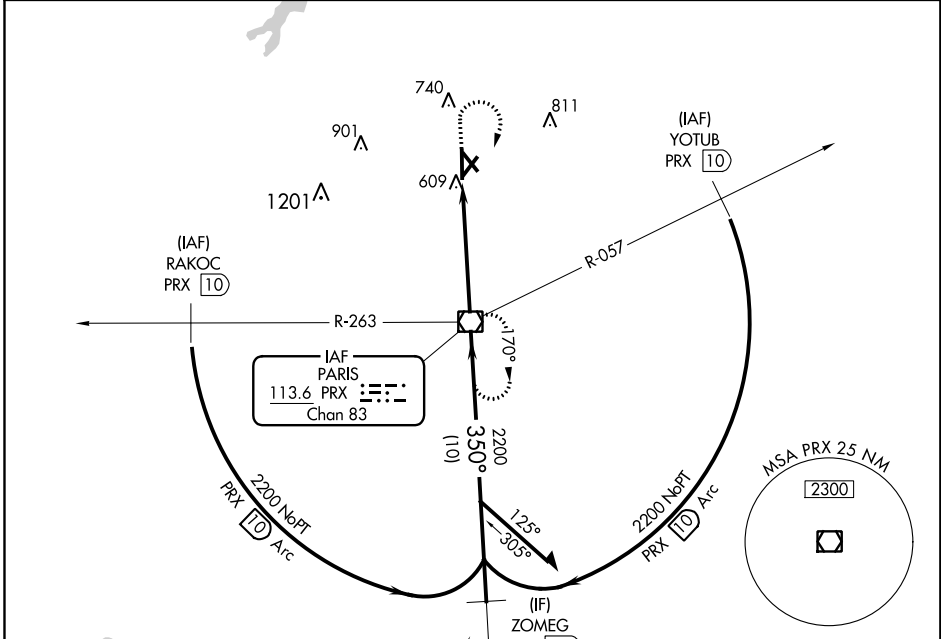
VOR RWY 35

COX FLD (PRX)

⚠ When local altimeter setting not received, use Sulphur Springs altimeter setting and increase all MDAs 80 feet; increase Circling Cats C/D visibility ¼ SM. Visibility reduction by helicopters NA. VDP NA when using Sulphur Springs altimeter setting.

⚠ MISSED APPROACH: Climb to 2000 then climbing right turn to 2200 direct PRX VOR/DME and hold.

AWOS-3PT 119.675	FORT WORTH CENTER 124.875	UNICOM 122.975 (CTAF) 📻
----------------------------	-------------------------------------	--



CATEGORY	A	B	C	D
S-35	940-1 408 (500-1)		940-1 1/8 408 (500-1 1/8)	940-1 1/4 408 (500-1 1/4)
CIRCLING	980-1 432 (500-1)	1060-1 512 (600-1)	1100-1 1/2 552 (600-1 1/2)	1220-2 1/4 672 (700-2 1/4)

ELEV 548	TDZE 532
----------	----------

FAF to MAP 5.2 NM	Knots	60	90	120	150	180
	Min:Sec	5:12	3:28	2:36	2:05	1:44

SC-2, 11 AUG 2022 to 08 SEP 2022

SC-2, 11 AUG 2022 to 08 SEP 2022