

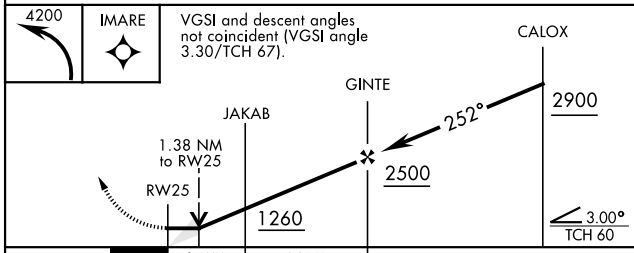
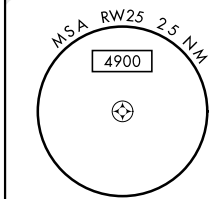
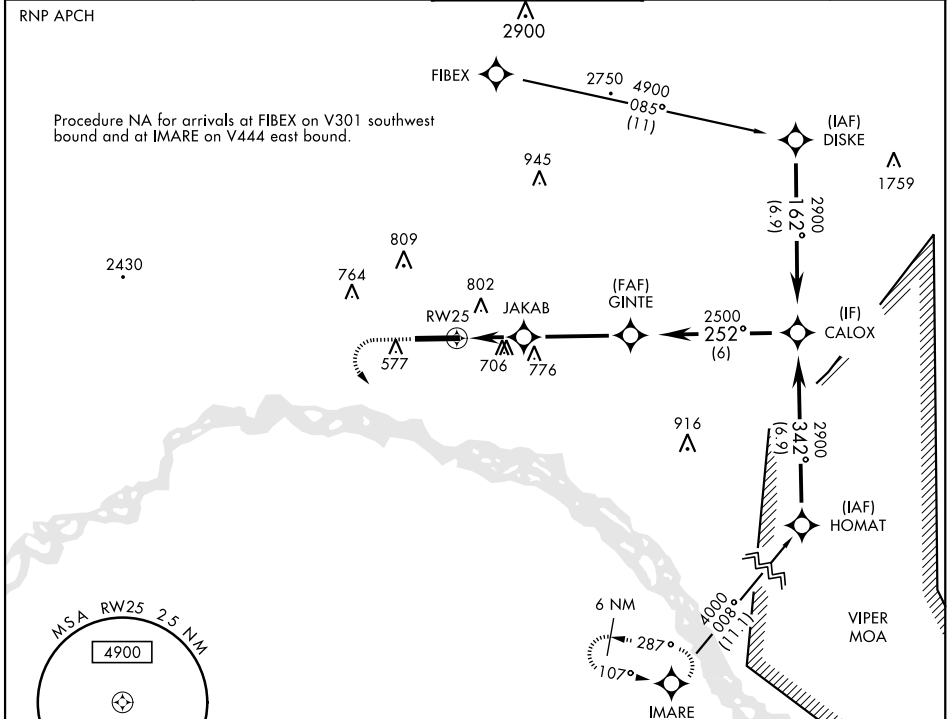
RNAV (GPS) RWY 25

APCH CRS	Rwy Idg	8575
252°	TDZE	449
	Arprt Elev	449

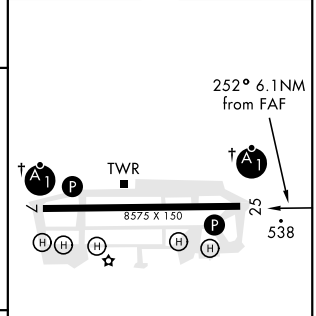
AL-1219 [USA]

LADD AAF (PAFB)

<p>▼ * Circling not authorized N of Rwy 7-25.</p>		<p>ALSIF-1</p>	<p>MISSED APPROACH: Climbing left turn to 4200 direct IMARE and hold.</p>	
<p>ATIS</p> <p>134.25</p>	<p>FAIRBANKS APP CON</p> <p>127.1 251.1 360° - 179° 125.35 363.2 180° - 359°</p>	<p>TOWER*</p> <p>125.0 (CTAF) 0 284.6</p>	<p>GND CON</p> <p>121.7 263.15</p>	<p>ASR/PAR</p>



ELEV	449	TDZE	449
------	-----	------	-----



CATEGORY	A	B	C	D
LNAV MDA	1000-½	551 (600-½)	1000-1⅛	551 (600-1⅛)
CIRCLING*	1000-1	1040-1	1080-1¼	1160-2¼
	551 (600-1)	591 (600-1)	631 (700-1¾)	711 (800-2¼)

HIRL Rwy 7-25

† ALS non-standard

RNAV (GPS) RWY 25

AK, 14 JUL 2022 to 08 SEP 2022

AK, 14 JUL 2022 to 08 SEP 2022