

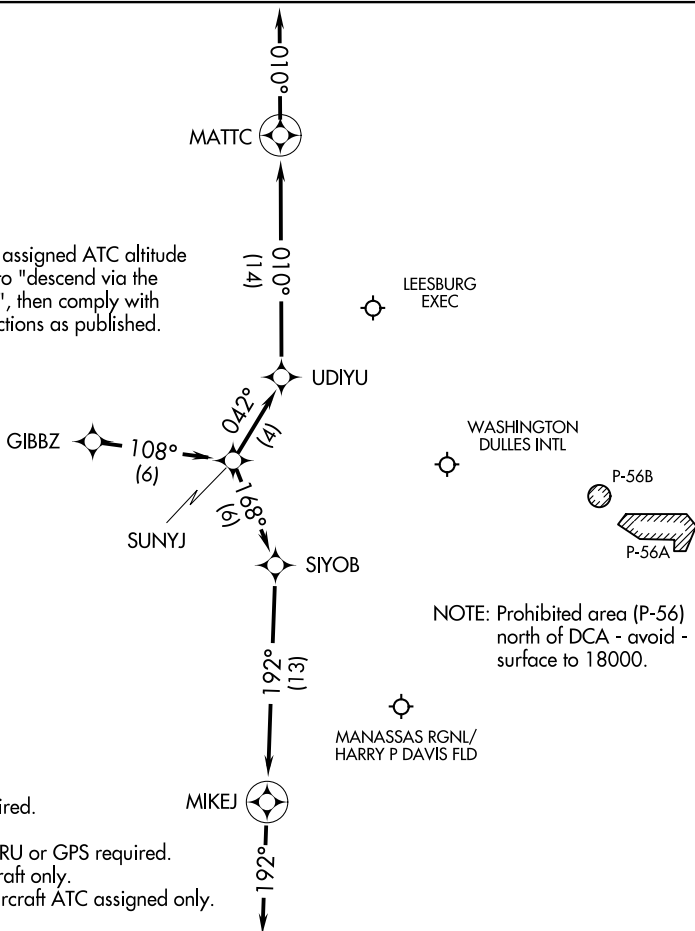
AL-5100 (FAA)

GIBBZ FOUR ARRIVAL (RNAV) Arrival Routes

WASHINGTON, DC

POTOMAC APP CON
120.45 306.925
HEF ATIS
125.175
IAD D-ATIS
134.85

NOTE: Maintain last assigned ATC altitude until cleared to "descend via the GIBBZ FOUR", then comply with altitude restrictions as published.



NOTE: RADAR required. MIK
NOTE: RNAV 1.
NOTE: DME/DME/IRU or GPS required.
NOTE: Turbojet aircraft only.
NOTE: Turboprop aircraft ATC assigned only.

NOTE: Chart not to scale.

ARRIVAL ROUTE DESCRIPTION

LANDING RUNWAYS 1L/C/R, 30: From GIBBZ on track 108° to SUNYJ, then on track 168° to SIYOB, then on track 192° to MIKEJ, then on track 192°. Expect radar vectors to final approach course.

LANDING RUNWAYS 19L/C/R: From GIBBZ on track 108° to SUNYJ, then on track 042° to UDIYU, then on track 010° to MATTC, then on track 010°. Expect radar vectors to final approach course.

GIBB7 FOUR ARRIVAL (RNAV) Arrival Routes

WASHINGTON, DC

(GIBBZ.GIBBZ4) 31DEC20

NE-3, 11 AUG 2022 to 08 SEP 2022

NE-3, 11 AUG 2022 to 08 SEP 2022