

WAAS CH 90230 W18A	APP CRS 184°	Rwy Idg TDZE Apt Elev	5201 915 925
--	------------------------	-----------------------------	---

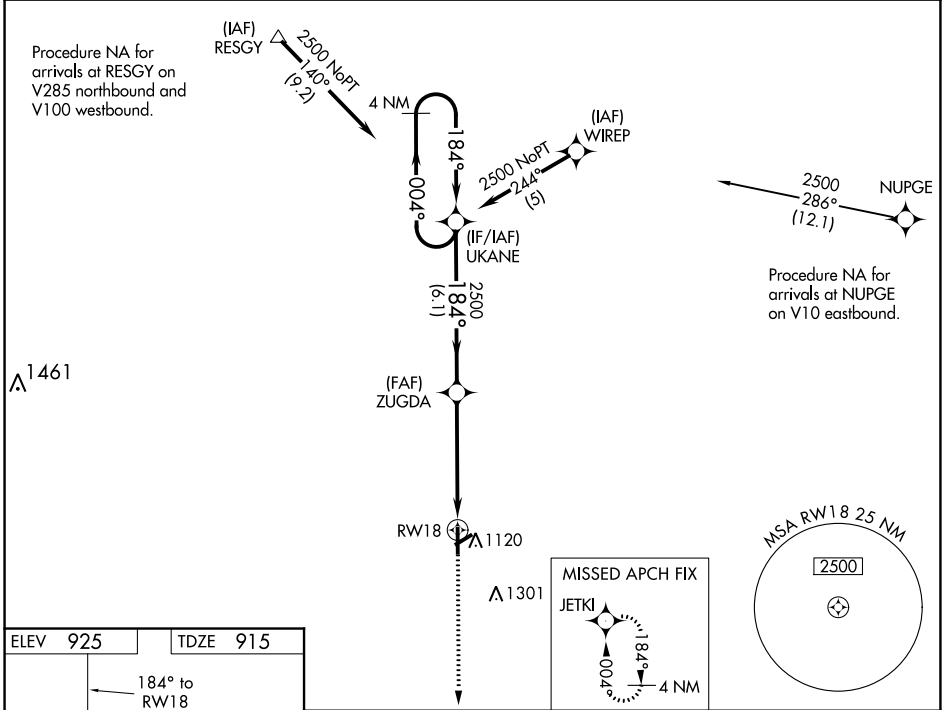
RNAV (GPS) RWY 18

KIRSCH MUNI (IRS)

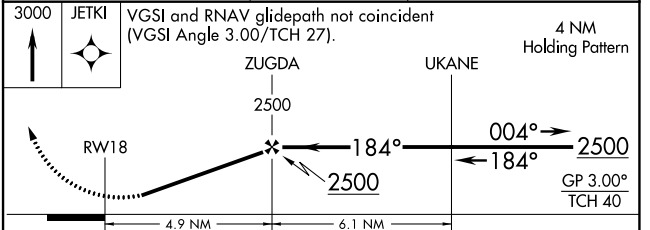
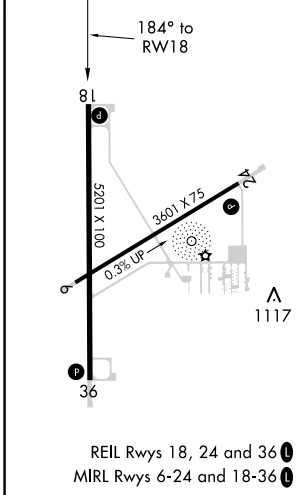
Baro-VNAV NA. When VGSI inop, Straight-In/Circling Rwy 18 procedure NA at night. DME/DME RNP-0.3 NA. Visibility reduction by helicopters NA. When local altimeter setting not received, use Three Rivers altimeter setting and increase all DA/MDA 40 feet; increase LPV visibility all Cats and LNAV Cat C and D ½ mile, increase LNAV/VNAV vis all Cats ¼ mile.

MISSED APPROACH:
Climb to 3000 direct JETKI and hold.

AWOS-3 121.325	GREAT LAKES APP CON * 121.2 239.25	CLNC DEL 118.325	UNICOM 123.05 (CTAF)
--------------------------	--	----------------------------	--------------------------------



ELEV 925	TDZE 915
----------	----------



CATEGORY	A	B	C	D
LPV DA	1235-1 1/8		320 (400-1 1/8)	
LNAV/VNAV DA	1229-1		314 (400-1)	
LNAV MDA	1400-1	485 (500-1)	1400-1 3/8	485 (500-1 3/8)
CIRCLING	1440-1	515 (600-1)	1620-2 695 (700-2)	1620-2 1/4 695 (700-2 1/4)

EC-1, 11 AUG 2022 to 08 SEP 2022

EC-1, 11 AUG 2022 to 08 SEP 2022