

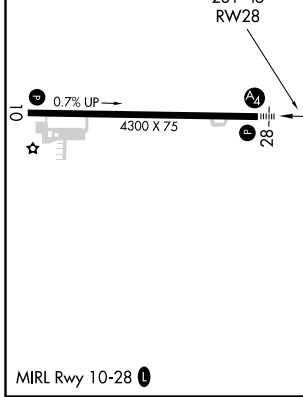
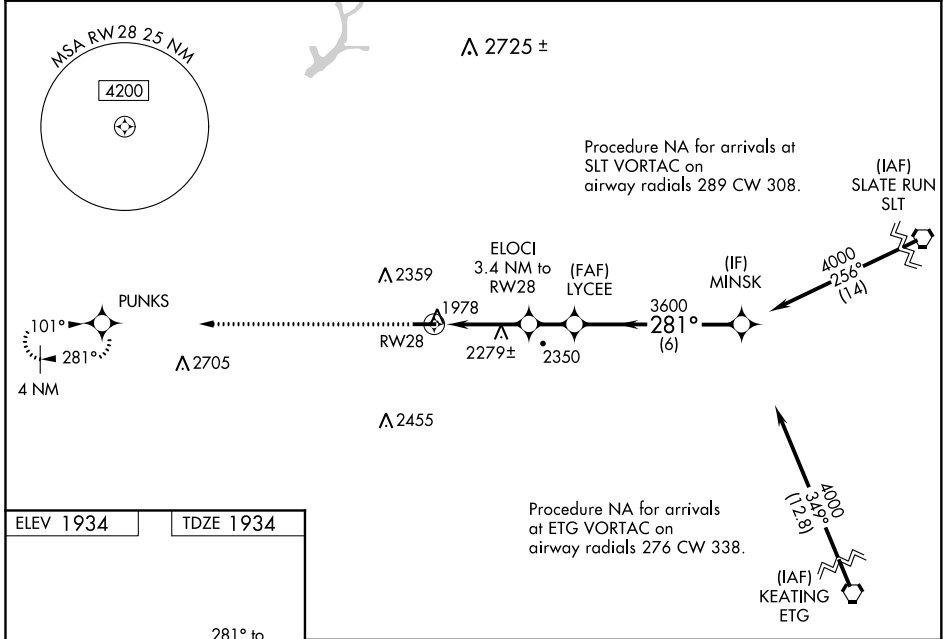
WAAS CH 82302 W28A	APP CRS 281°	Rwy Idg TDZE 1934 Apt Elev 1934
--	------------------------	---

RNAV (GPS) RWY 28

ST MARYS MUNI (OYM)

RNP APCH.	<p>MALS</p> <p>MISSED APPROACH: Climb to 4000 direct PUNKS and hold.</p>
<p>▼ Rwy 28 helicopter visibility reduction below 3/4 SM NA. Inop table does not apply to LPV all cats and LNAV Cat A/B. VDP NA when using Bradford altimeter setting. When local altimeter setting not received, use Bradford altimeter setting and increase all DA/MDA 240 feet, and LPV all Cats visibility 3/8 SM, LNAV Cat A/B 1/4 SM and Cat C/D 3/8 SM, and Circling Cat A 1/4 SM, Cat B 1/2 SM, Cat C 3/4 SM. For inop ALS when using Bradford altimeter setting, increase LPV all Cats visibility to 1 1/4 SM and LNAV Cat A/B to 1 1/4 SM.</p>	

AWOS-3P 118.05	CLEVELAND CENTER 126.725 291.65	ALTOONA CLNC DEL 122.4	UNICOM 122.7 (CTAF) 0
--------------------------	---	----------------------------------	---------------------------------



4000	PUNKS	ELOCI 3.4 NM to RW28	LYCEE 3600	MINSK 4000
*LNAV only.				
RW28	*2.1 NM to RW28	*3040	3600	GP 3.00° TCH 40
2.1 NM		1.3 NM	1.6 NM	6 NM
CATEGORY	A	B	C	D
LPV DA	2290-1		356 (400-1)	
LNAV MDA	2640-1	706 (800-1)	2640-1 3/4	706 (800-1 3/4)
CIRCLING	2640-1 706 (800-1)	2660-1 726 (800-1)	2700-2 766 (800-2)	2840-2 3/4 906 (1000-2 3/4)