

MILLERSBURG, OHIO

AL-5561 (FAA)

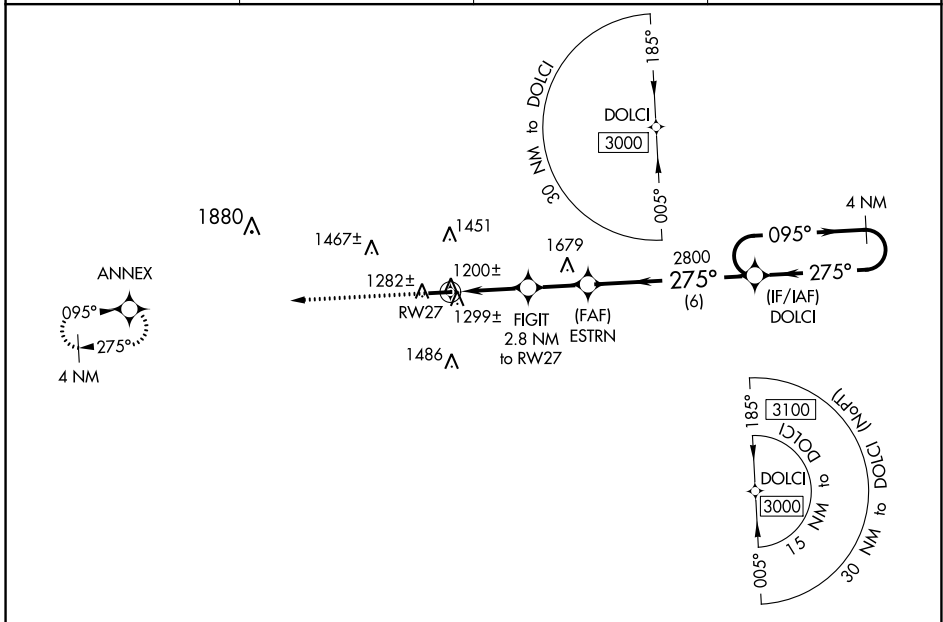
20086

WAAS CH 57937 W27A	APP CRS 275°	Rwy Idg 4400 TDZE 1215 Apt Elev 1227
--	------------------------	---

RNAV (GPS) RWY 27

HOLMES COUNTY (10G)

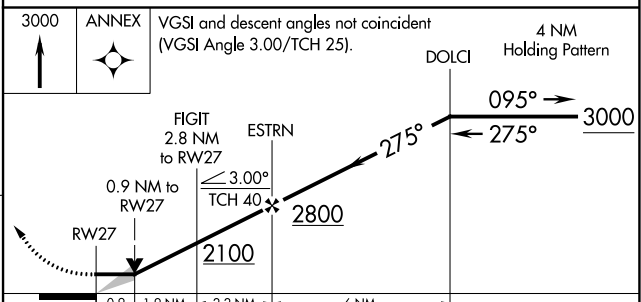
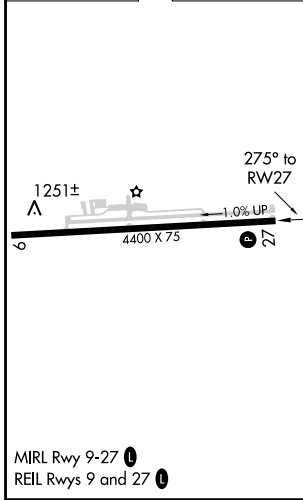
RNP APCH.			MISSED APPROACH: Climb to 3000 direct ANNEX and hold.
AWOS-3 128.325	INDIANAPOLIS CENTER 124.45 370.9	UNICOM 123.0 (CTAF)	123.4



EC-2, 11 AUG 2022 to 08 SEP 2022

EC-2, 11 AUG 2022 to 08 SEP 2022

ELEV 1227	TDZE 1215
-----------	-----------



CATEGORY	A	B	C	D
LP MDA	1480-1		265 (300-1)	
LNAV MDA	1560-1		345 (400-1)	
CIRCLING	1760-1	533 (600-1)	1840-1 ³ / ₄ 613 (700-1 ³ / ₄)	1860-2 633 (700-2)

MILLERSBURG, OHIO
Orig-B 26MAR20

40°32'N-81°57'W

RNAV (GPS) RWY 27

HOLMES COUNTY (10G)