

WAAS CH 70604 W07A	APP CRS 069°	Rwy Idg TDZE Apt Elev	5100 1318 1318
--	------------------------	-----------------------------	---

RNAV (GPS) RWY 7

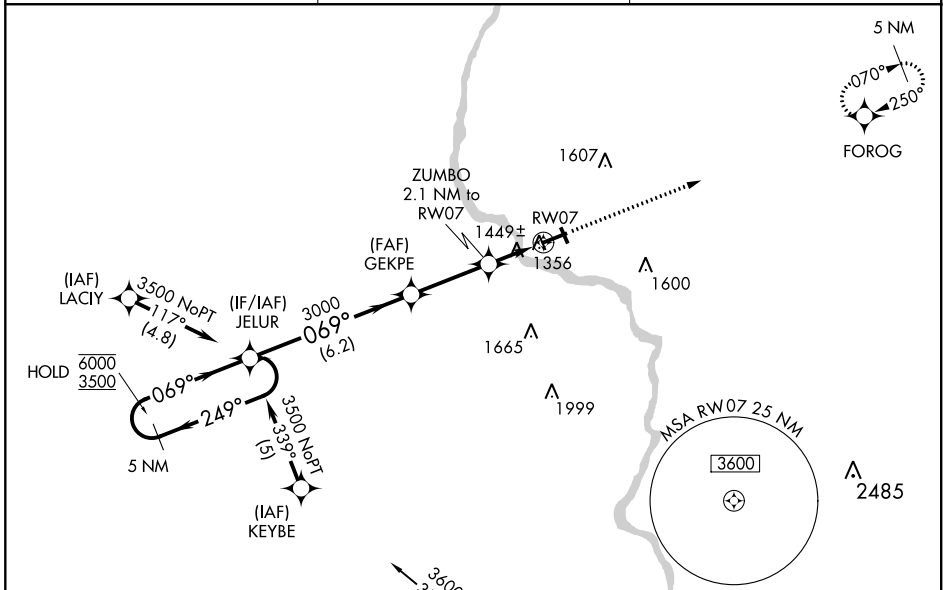
MERRILL MUNI (R.R.L.)

RNP APCH.

▼ Circling Rwy 16, 34 NA at night. Rwy 7 helicopter visibility reduction below ¾ SM NA.
▲ For uncompensated Baro-VNAV systems, LNAV/VNAV NA below -17°C or above 54°C.

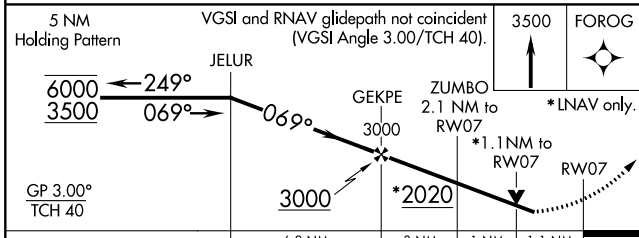
MISSED APPROACH:
Climb to 3500 direct FOROG and hold.

AWOS-3 119.925	MINNEAPOLIS CENTER 124.4 317.7	UNICOM 122.8 (CTAF) 0
--------------------------	--	---------------------------------

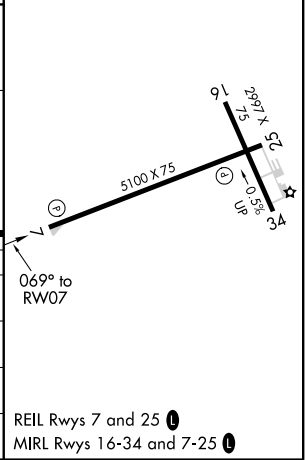


Procedure NA for arrivals at AUV
VOR/DME on airway radials 271 CW 005.

ELEV 1318	TDZE 1318
-----------	-----------



CATEGORY	A	B	C	D
LPV DA	1635-1¼	317 (400-1¼)		NA
LNAV/VNAV DA	1754-1½	436 (500-1½)		NA
LNAV MDA	1700-1	382 (400-1)		NA
CIRCLING	1760-1 442 (500-1)	1780-1 462 (500-1)	1920-1¾ 602 (700-1¾)	NA



REIL Rwy 7 and 25 0
MIRL Rwy 16-34 and 7-25 0

EC-3, 11 AUG 2022 to 08 SEP 2022

EC-3, 11 AUG 2022 to 08 SEP 2022