

APP CRS	Rwy Idg	<b>4002</b>
<b>060°</b>	TDZE	<b>631</b>
	Apt Elev	<b>632</b>

# RNAV (GPS) RWY 6

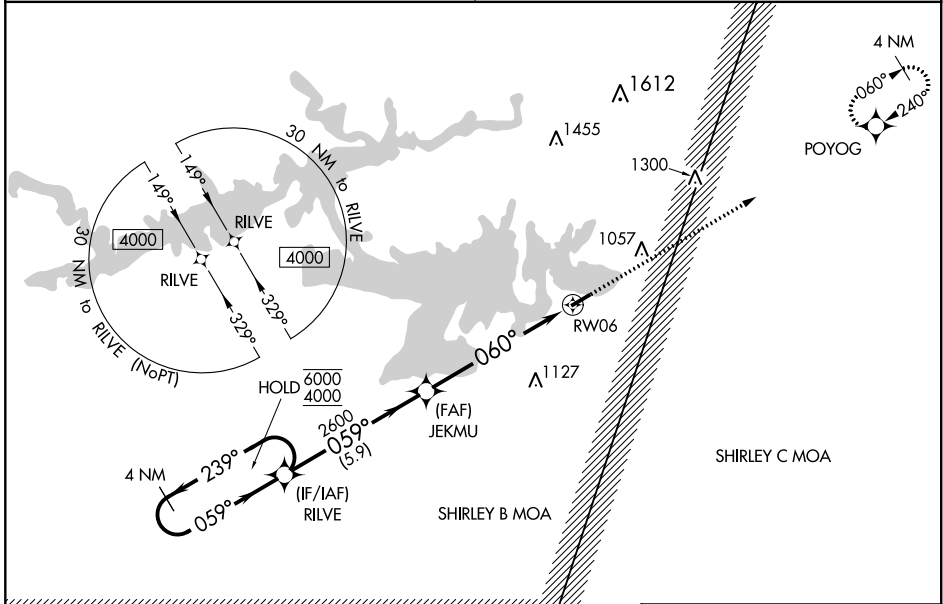
HEBER SPRINGS MUNI (HBZ)

RNP APCH.

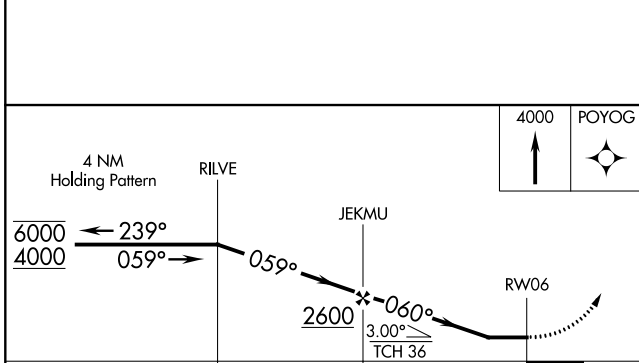
**Procedure NA at night. Rwy 6 helicopter visibility reduction below 1 SM NA. Obtain local altimeter setting on CTAF; when not received, use Batesville altimeter setting and increase all MDAs 80 feet, and increase LNAV visibility Cat C and D 1/4 SM. Increase Circling visibility Cat C 1/2 SM, Cat D 1/2 SM.**

**MISSED APPROACH:** Climb to 4000 direct POYOG and hold, continue climb-in hold 4000.

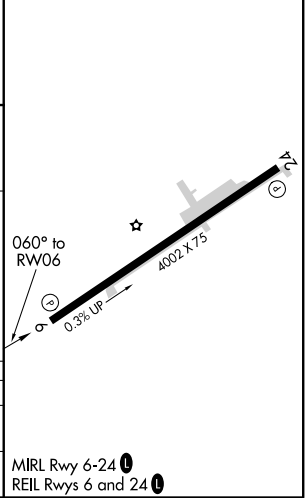
MEMPHIS CENTER <b>126.85 281.55</b>	UNICOM <b>122.7 (CTAF)</b>
--	-------------------------------



ELEV 632	TDZE 631
----------	----------



CATEGORY	A	B	C	D
LNAV MDA	1240-1	609 (700-1)	1240-1 <sup>3</sup> / <sub>4</sub>	609 (700-1 <sup>3</sup> / <sub>4</sub> )
CIRCLING	1240-1 608 (700-1)	1380-1 748 (800-1)	1380-2 <sup>1</sup> / <sub>4</sub> 748 (800-2 <sup>1</sup> / <sub>4</sub> )	1440-2 <sup>1</sup> / <sub>2</sub> 808 (900-2 <sup>1</sup> / <sub>2</sub> )



SC-1, 11 AUG 2022 to 08 SEP 2022

SC-1, 11 AUG 2022 to 08 SEP 2022