

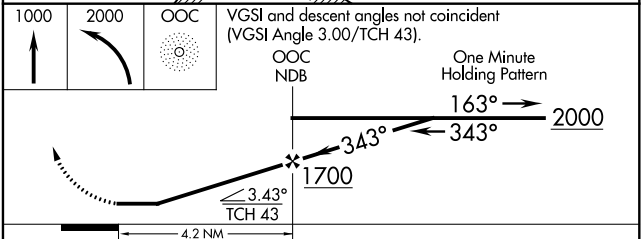
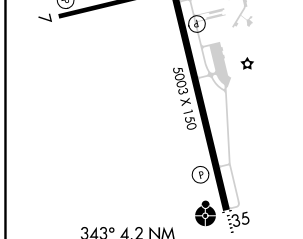
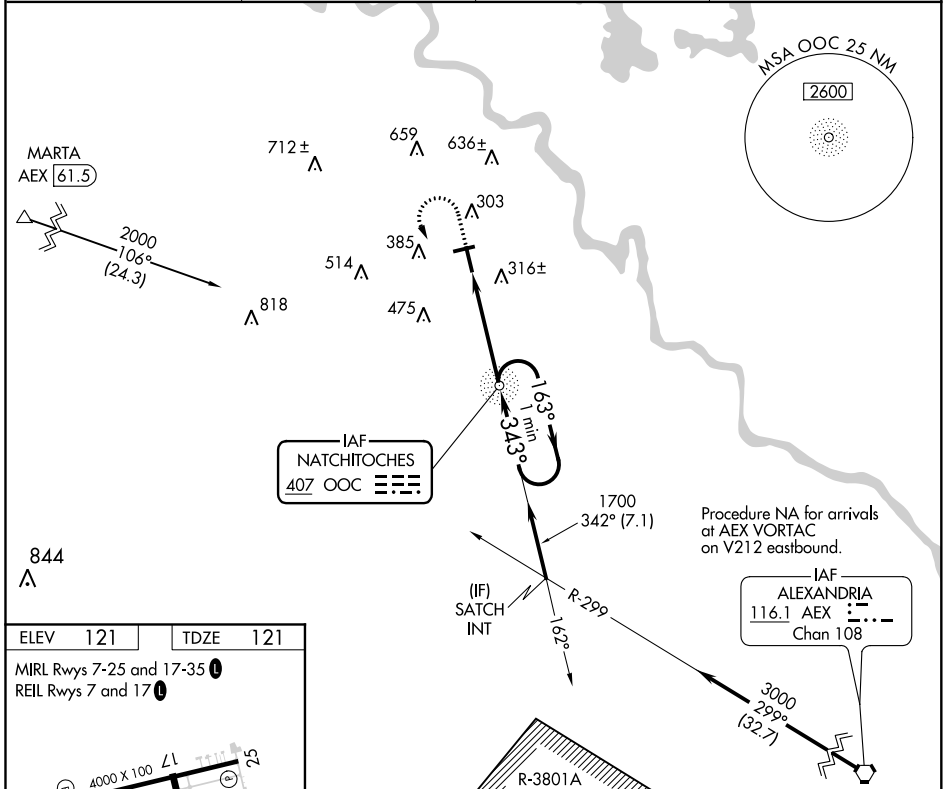
NDB OOC 407	APP CRS 343°	Rwy Idg 5003
		TDZE 121
		Apt Elev 121

NDB RWY 35

NATCHITOCHE RGNL (IER)

<p>NA Helicopter visibility reduction below 3/4 SM NA. When local altimeter setting not received, use Alexandria Intl altimeter setting: Increase all MDA 100 feet and S-35 Cat C visibility 1/8 SM and Circling Cat C visibility 1/2 SM. For inoperative ODALS increase S-35 Cat C visibility 1/8 mile. Inoperative table does not apply to S-35 Cat A/B.</p>	<p>ODALS</p>	<p>MISSED APPROACH: Climb to 1000 then climbing left turn to 2000 direct OOC NDB and hold.</p>
---	---------------------	---

AWOS-3 119.025	POLK APP CON 125.4 302.2	GCO 135.075	UNICOM 122.8(CTAF)
--------------------------	------------------------------------	-----------------------	------------------------------



FAF to MAP 4.2 NM

Knots	60	90	120	150	180
Min:Sec	4:12	2:48	2:06	1:41	1:24

CATEGORY	A	B	C	D
S-35	720-1	599 (600-1)	720-1 1/2 599 (600-1 1/2)	NA
CIRCLING	720-1 599 (600-1)	740-1 619 (700-1)	860-2 739 (800-2)	NA

SC-4, 11 AUG 2022 to 08 SEP 2022

SC-4, 11 AUG 2022 to 08 SEP 2022