

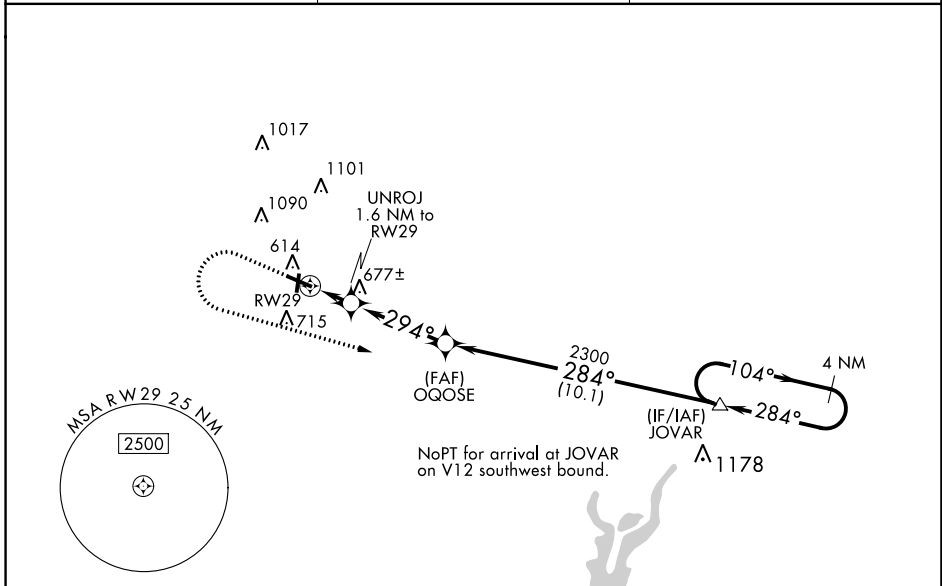
WAAS CH 93933 W29A	APP CRS 294°	Rwy Idg 5103 TDZE 579 Apt Elev 585
--	------------------------	---

RNAV (GPS) RWY 29

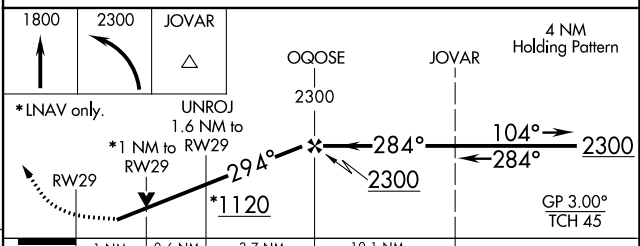
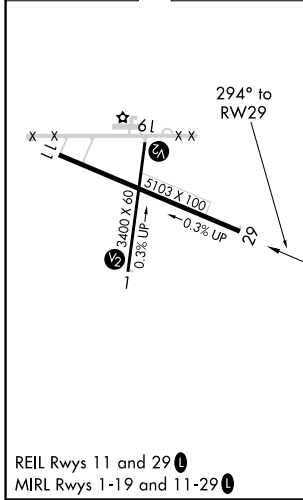
EFFINGHAM COUNTY MEML (1H2)

RNP APCH.	<p>▼ Rwy 29 helicopter visibility reduction below $\frac{3}{4}$ SM NA. Straight-in Rwy 1 NA at night, Circling Rwy 1, 19 NA at night. For uncompensated Baro-VNAV systems, LNAV/VNAV below -16°C or above 54°C. Baro-VNAV and VDP NA when using Olney-Noble altimeter setting. When local altimeter setting not received, use Olney-Noble altimeter setting and increase all DA 77 feet and all MDA 80 feet; increase LPV all Cats and Circling Cat C/D visibility $\frac{1}{4}$ SM, increase LNAV/VNAV all Cats visibility $\frac{3}{8}$ SM.</p>	MISSED APPROACH: Climb to 1800 then climbing left turn to 2300 direct JOVAR and hold.
-----------	---	--

AWOS-3 118.375	KANSAS CITY CENTER 124.3 269.15	UNICOM 122.725 (CTAF) 0
--------------------------	---	-----------------------------------



ELEV 585	TDZE 579
----------	----------



CATEGORY	A	B	C	D
LPV DA		838- $\frac{7}{8}$	259 (300- $\frac{7}{8}$)	
LNAV/VNAV DA		859- $\frac{7}{8}$	280 (300- $\frac{7}{8}$)	
LNAV MDA		940-1	361 (400-1)	
C CIRCLING	1020-1 435 (500-1)	1140-1 555 (600-1)	1440-2 $\frac{1}{2}$ 855 (900-2 $\frac{1}{2}$)	1440-2 $\frac{3}{4}$ 855 (900-2 $\frac{3}{4}$)

EC-3, 11 AUG 2022 to 08 SEP 2022

EC-3, 11 AUG 2022 to 08 SEP 2022