

WAAS CH 42818 W25A	APP CRS 246°	Rwy ldg 5003 TDZE 147 Apt Elev 147
--	------------------------	---

RNAV (GPS) RWY 25

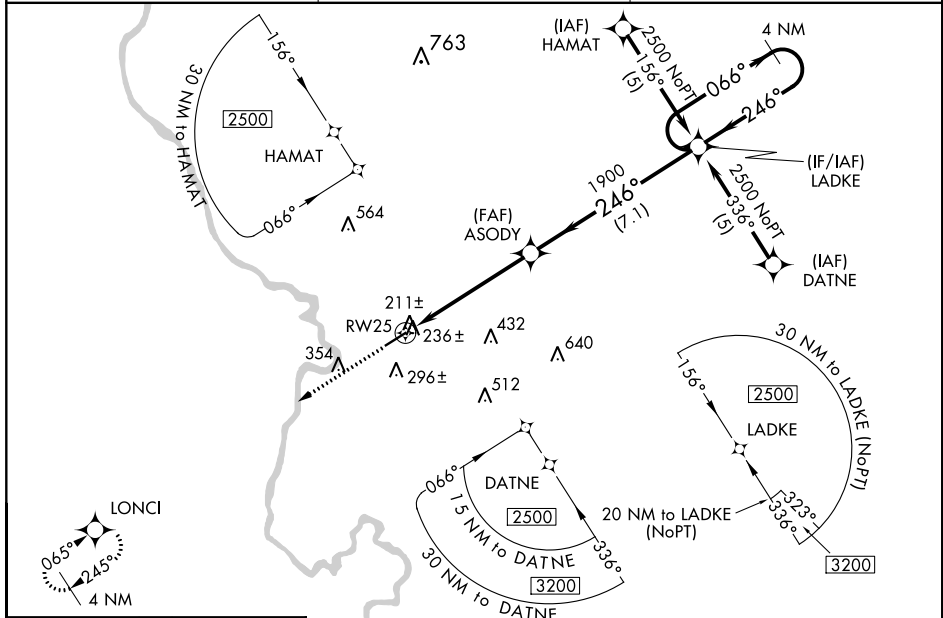
MARLBORO COUNTY JETPORT-H E AVENT FLD (BBP)

RNP APCH.

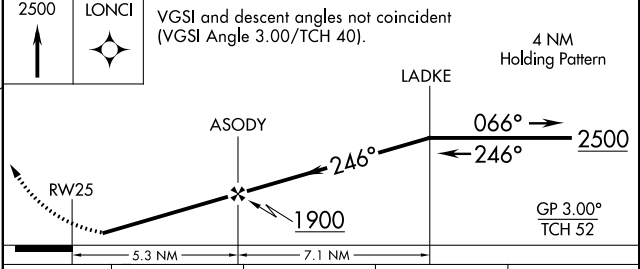
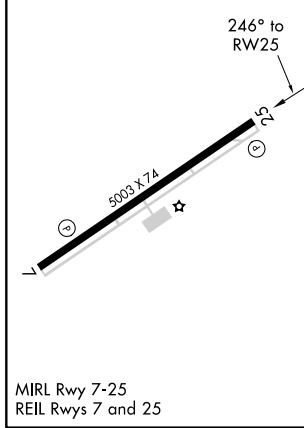
▼ Baro-VNAV NA when using Florence altimeter setting. For uncompensated Baro-VNAV systems, LNAV/VNAV NA below -15°C or above 47°C. Rwy 25 helicopter visibility reduction below 3/4 SM NA. When local altimeter setting not received, use Florence altimeter setting and increase all DA 61 feet and MDA 80 feet. Increase LPV all Cats, and LNAV Cat C and D visibility 1/4 mile.

MISSED APPROACH: Climb to 2500 direct LONCI and hold.

AWOS-3PT 123.825	FLORENCE APP CON * 118.6 341.7	UNICOM 122.8 (CTAF)
----------------------------	--	-------------------------------



ELEV 147	TDZE 147
----------	----------



CATEGORY	A	B	C	D
LPV DA	441-1		294 (300-1)	
LNAV/VNAV DA	621-1 3/4		474 (500-1 3/4)	
LNAV MDA	680-1	533 (600-1)	680-1 1/2 533 (600-1 1/2)	680-1 3/4 533 (600-1 3/4)

SE-2, 11 AUG 2022 to 08 SEP 2022

SE-2, 11 AUG 2022 to 08 SEP 2022