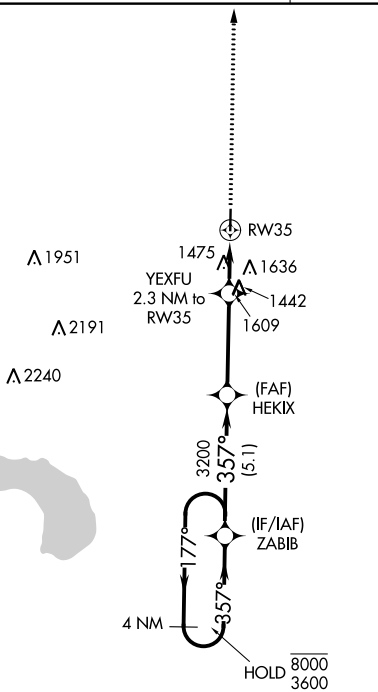
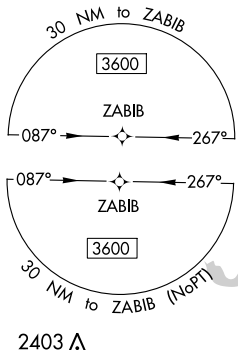
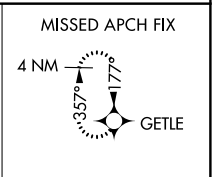


WAAS CH <b>82443</b> <b>W35A</b>	APP CRS <b>357°</b>	Rwy ldg TDZE Apt Elev	<b>4400</b> <b>1274</b> <b>1274</b>
--	------------------------	-----------------------------	---

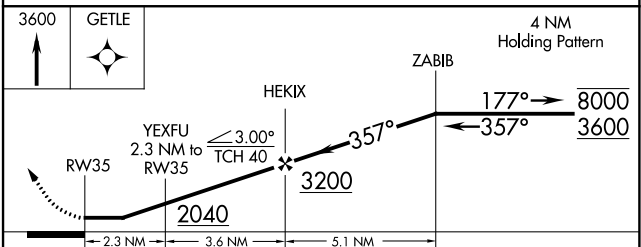
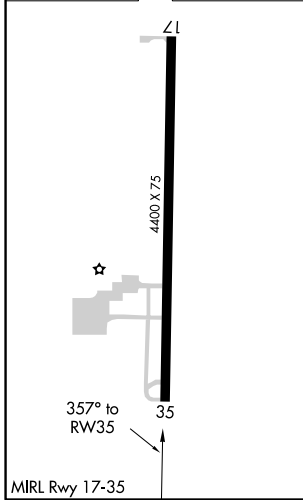
**RNAV (GPS) RWY 35**  
FAIRVIEW MUNI (6K4)

RNP APCH.	<p>Procedure NA at night. Rwy 35 helicopter visibility reduction below 1 SM NA. Baro-VNAV NA. Use Vance AFB altimeter setting; when not received, use Watonga altimeter setting; increase all MDA 40 feet, and increase LP and LNAV visibility Cats C/D ½ SM.</p>	MISSED APPROACH: Climb to 3600 direct to GETLE and hold.
-----------	---	--

KEND ATIS <b>115.4</b>	VANCE APP CON ★ <b>126.75 346.325</b>	UNICOM <b>122.8 (CTAF)</b>
---------------------------	--	-------------------------------



ELEV 1274	TDZE 1274
-----------	-----------



CATEGORY	A	B	C	D
LP MDA	1800-1	526 (600-1)	1800-1½	526 (600-1½)
LNAV MDA	1940-1	666 (700-1)	1940-1⅞	666 (700-1⅞)
CIRCLING	1940-1 666 (700-1)	2020-1 746 (800-1)	2020-2¼ 746 (800-2¼)	2180-3 906 (1000-3)

SC-1, 11 AUG 2022 to 08 SEP 2022

SC-1, 11 AUG 2022 to 08 SEP 2022