

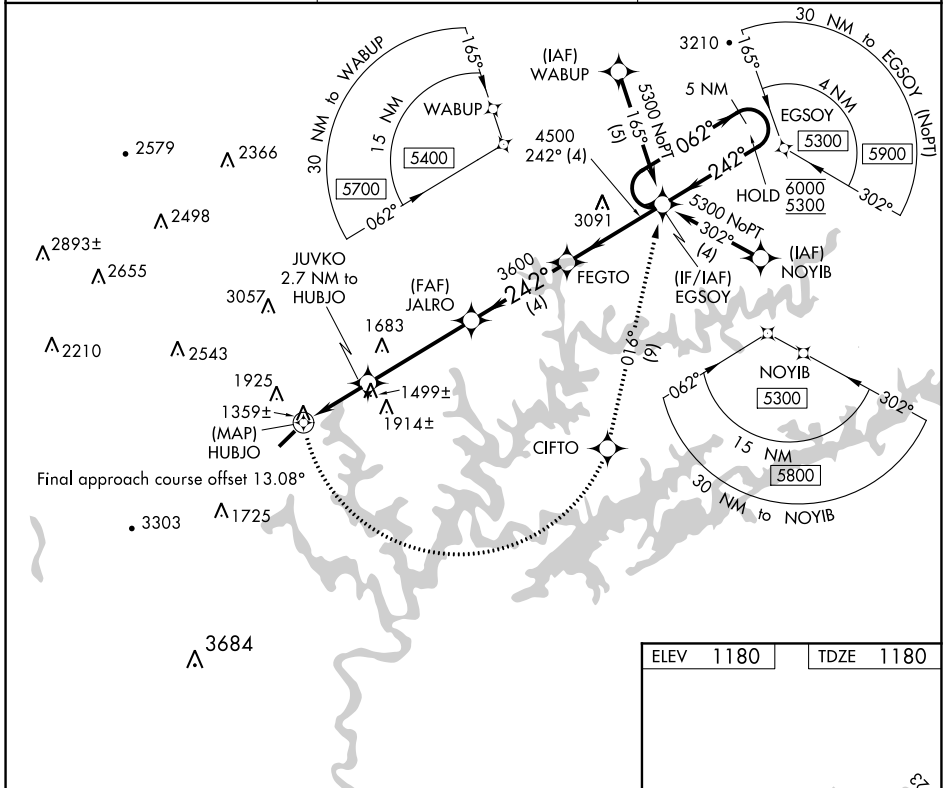
WAAS CH 77736 W23A	APP CRS 242°	Rwy Idg TDZE Apt Elev	4000 1180 1180
--	------------------------	-----------------------------	---

RNAV (GPS) RWY 23

COLONEL TOMMY C STINER AIRFIELD (JAU)

RNP APCH.	MISSED APPROACH: Climbing left turn to 5300 direct CIFTO and on track 016° to EGSOY and hold, continue climb-in-hold to 5300.
<p>▼ Circling NA northwest of Rwy 5-23. Rwy 23 helicopter visibility reduction below 3/4 SM NA.</p>	

AWOS-3 124.975	ATLANTA CENTER 133.6 254.3	UNICOM 122.8 (CTAF) 0
--------------------------	--------------------------------------	---------------------------------

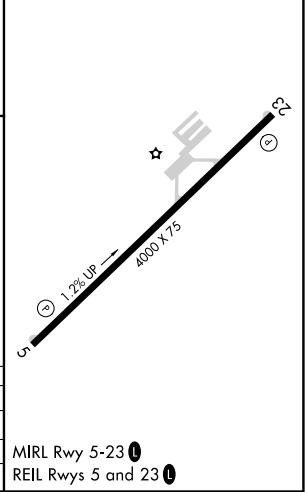


SE-1, 11 AUG 2022 to 08 SEP 2022

SE-1, 11 AUG 2022 to 08 SEP 2022

ELEV 1180	TDZE 1180
-----------	-----------

5300	CIFTO	tr 016°	EGSOY	Visual Segment - Obstacles.
<p>JUVKO 2.7 NM to HUBJO</p> <p>1.4 NM to HUBJO</p>				
<p>0.5 1.4 1.3 4.3 NM 4 NM</p>				
CATEGORY	A	B	C	D
LP MDA	1640-1	460 (500-1)		NA
LNVA MDA	1920-1	740 (800-1)		NA
CIRCLING	1920-1	740 (800-1)		NA



MIRL Rwy 5-23 0
REIL Rwy 5 and 23 0