

APP CRS	Rwy Idg	<b>3194</b>
<b>237°</b>	TDZE	<b>87</b>
	Apt Elev	<b>87</b>

# RNAV (GPS) RWY 24

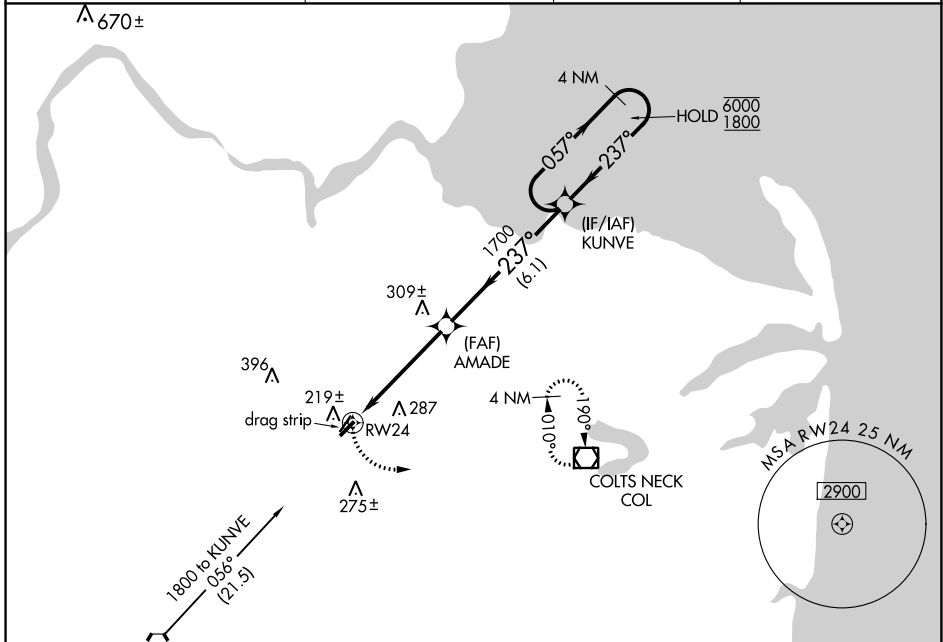
OLD BRIDGE (3N6)

RNP APCH.

**NA** Procedure NA at night. Rwy 24 helicopter visibility reduction below 1 SM NA. Use Belmar/Farmingdale altimeter setting; when not received, use Wrightstown altimeter setting and increase all MDA 20 feet.

**MISSED APPROACH:** Climbing left turn to 2000 direct COL VOR/DME and hold.

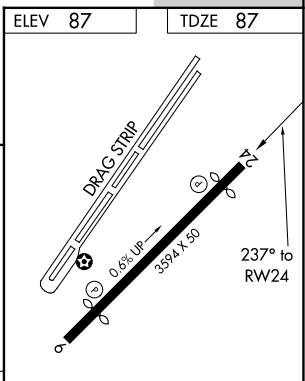
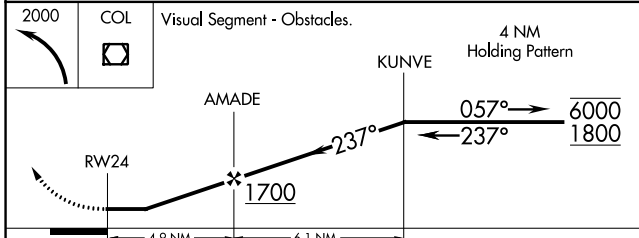
BLM AWOS-3PT <b>121.625</b>	MC GUIRE APP CON <b>126.475 363.8</b>	GCO <b>121.725</b>	UNICOM <b>123.075 (CTAF)</b>
--------------------------------	--	-----------------------	---------------------------------



NE-2, 11 AUG 2022 to 08 SEP 2022

NE-2, 11 AUG 2022 to 08 SEP 2022

ELEV 87	TDZE 87
---------	---------



CATEGORY	A	B	C	D
LNAV MDA	620-1	533 (600-1)	NA	
CIRCLING	620-1	533 (600-1)	NA	

REIL Rwy 6 and 24  
MIRL Rwy 6-24