

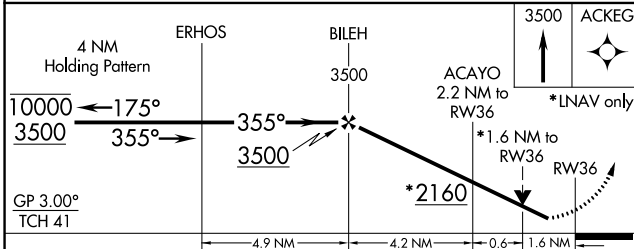
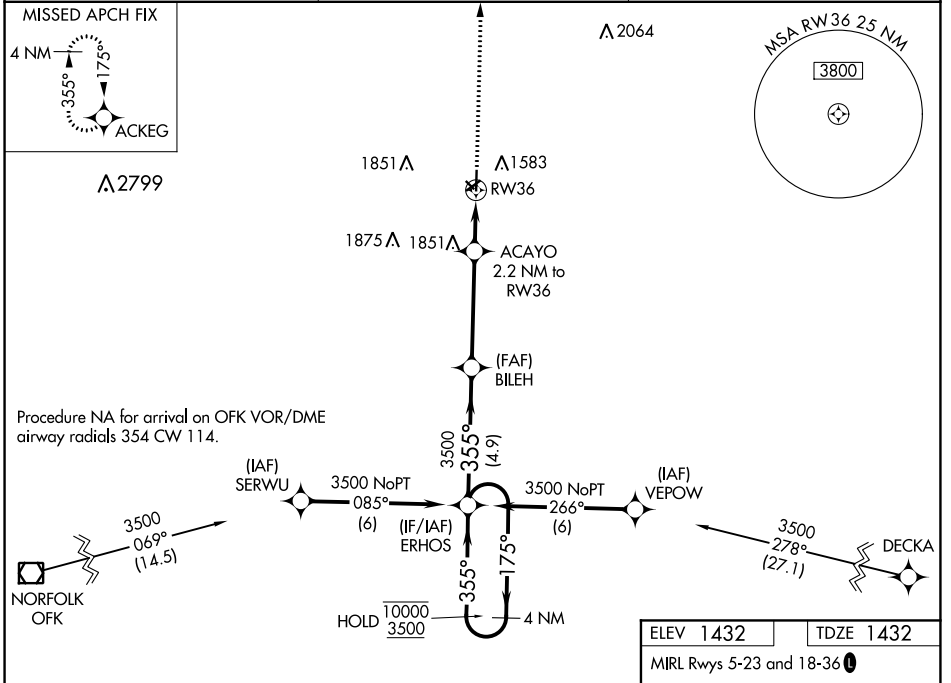
WAAS CH 69622 W36A	APP CRS 355°	Rwy Idg 4201 TDZE 1432 Apt Elev 1432
--	------------------------	---

RNAV (GPS) RWY 36

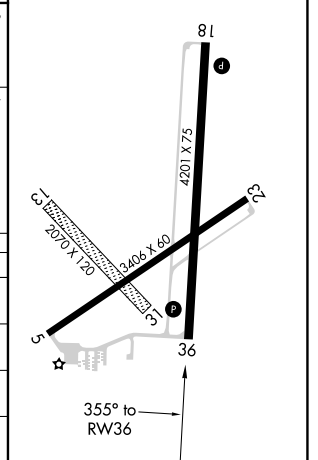
WAYNE MUNI/STAN MORRIS FIELD (L/G)

RNP APCH. ▼ Circling NA to Rwy 13 and 31. Rwy 36 helicopter visibility reduction below 3/4 SM NA. For uncompensated Baro-VNAV systems, LNAV/VNAV NA below -17°C or above 54°C.	MISSED APPROACH: Climb to 3500 direct ACKEG and hold.
---	---

AWOS-3 120.125	SIOUX CITY APP CON * 124.6 307.0	UNICOM 122.8 (CTAF) 0
--------------------------	--	---------------------------------



ELEV 1432	TDZE 1432
MIRL Rwy 5-23 and 18-36 0	



CATEGORY	A	B	C	D
LPV DA	1682-1	250 (300-1)		NA
LNAV/VNAV DA	1791-1 1/4	359 (400-1 1/4)		NA
LNAV MDA	1980-1	548 (600-1)		NA
CIRCLING	2000-1	568 (600-1)		NA

NC-2, 11 AUG 2022 to 08 SEP 2022

NC-2, 11 AUG 2022 to 08 SEP 2022