

|  |                        |   |
|--|------------------------|---|
| WAAS<br>CH <b>77724</b><br><b>W31A</b> | APP CRS<br><b>305°</b> | Rwy Idg <b>4000</b><br>TDZE <b>261</b><br>Apt Elev <b>264</b> |
|--|------------------------|---|

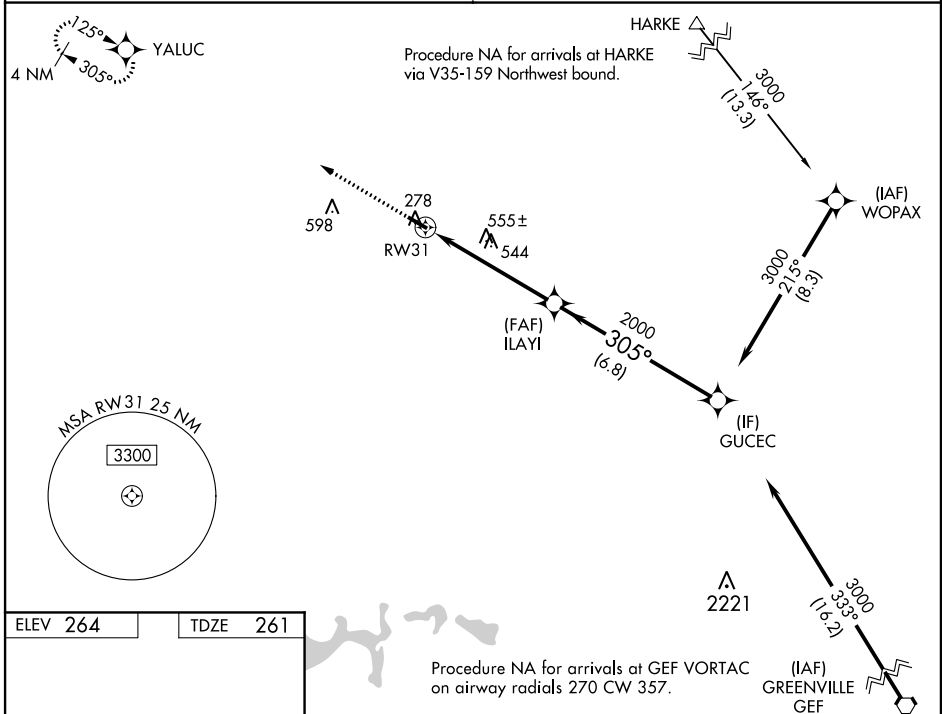
# RNAV (GPS) RWY 31

CAIRO-GRADY COUNTY (70J)

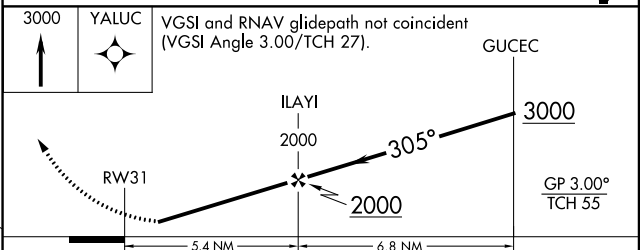
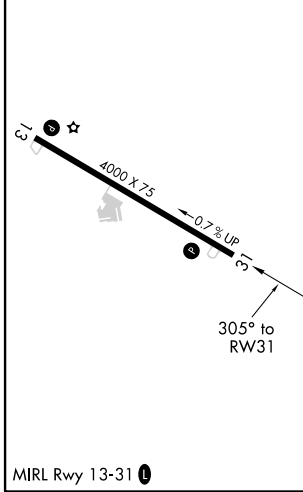
**▼** Baro-VNAV NA. For uncompensated Baro-VNAV systems, LNAV/VNAV NA below -15°C (5°F) or above 42°C (107°F). DME/DME RNP-0.3 NA. Visibility reduction by helicopters NA.  
**▲ NA** Use Moultrie altimeter setting, when not received, use Tallahassee Intl altimeter setting and increase LPV DA to 609, LNAV/VNAV DA to 653, and all MDA 60 feet; increase LPV and LNAV/VNAV all Cats and LNAV Cats C/D visibility 1/8 SM and increase Circling Cats C/D visibility 1/4 SM.

**MISSED APPROACH:**  
Climb to 3000 direct YALUC and hold.

|  |                               |
|--|-------------------------------|
| TALLAHASSEE APP CON*<br><b>128.7 254.3</b> | UNICOM<br><b>122.7 (CTAF)</b> |
|--|-------------------------------|



|          |          |
|----------|----------|
| ELEV 264 | TDZE 261 |
|----------|----------|



| CATEGORY     | A                     | B           | C               | D               |
|--------------|-----------------------|-------------|-----------------|-----------------|
| LPV DA       | 565-1 304 (300-1)     |             |                 |                 |
| LNAV/VNAV DA | 609-1 348 (400-1 1/8) |             |                 |                 |
| LNAV MDA     | 900-1                 | 639 (700-1) | 900-1 7/8       | 639 (700-1 1/8) |
| CIRCLING     | 900-1                 | 636 (700-1) | 1020-2 1/4      | 1020-2 1/2      |
|              |                       |             | 756 (800-2 1/4) | 756 (800-2 1/2) |

SE-4, 11 AUG 2022 to 08 SEP 2022

SE-4, 11 AUG 2022 to 08 SEP 2022