

WAAS CH <b>65820</b> W05A	APP CRS <b>054°</b>	Rwy Idg TDZE Apt Elev	<b>8801</b> <b>7014</b> <b>7014</b>
---------------------------------	------------------------	-----------------------------	---

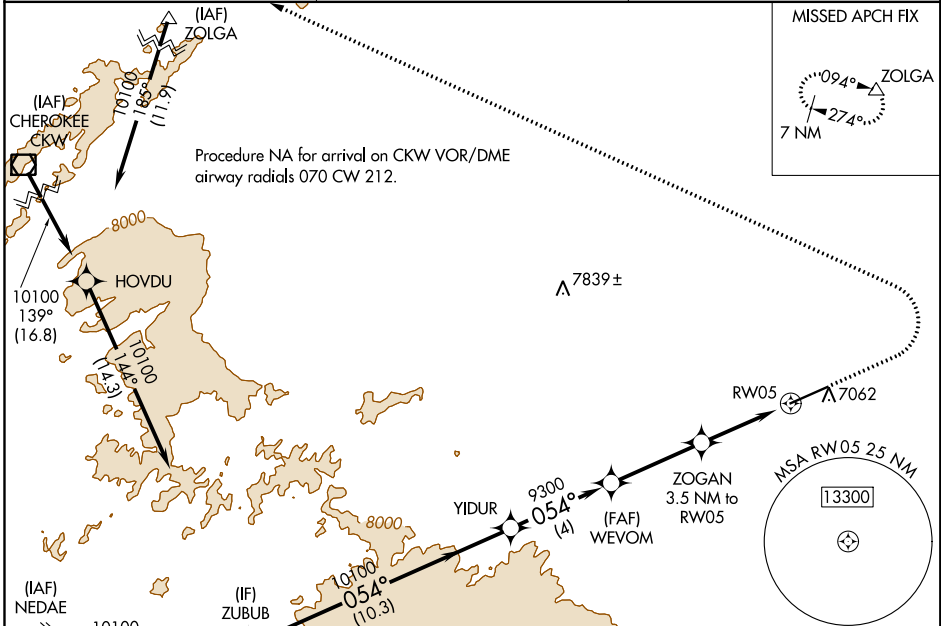
# RNAV (GPS) RWY 5

SHIVELY FLD (SAA)

RNP APCH.  
 ▼ For uncompensated Baro-VNAV systems, LNAV/VNAV NA  
 ▲ below -28°C or above 54°C.

MISSED APPROACH: Climb to 7800 then climbing left turn to 11000 direct ZOLGA and hold.

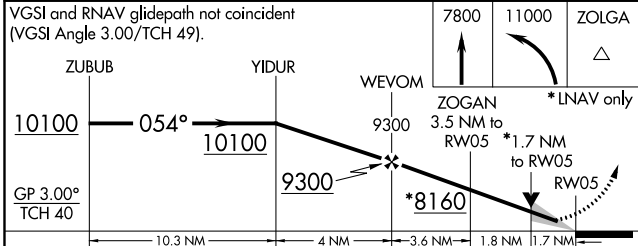
AWOS-3PT <b>118.175</b>	DENVER CENTER <b>132.1 254.35</b>	UNICOM <b>122.8 (CTAF) 0</b>
----------------------------	--------------------------------------	---------------------------------



NW-1, 11 AUG 2022 to 08 SEP 2022

NW-1, 11 AUG 2022 to 08 SEP 2022

(IAF) NEDAE 10100 077° (18.4)	(IF) ZUBUB 10100 054° (10.3)	9091	9439	ELEV 7014	TDZE 7014
--	---------------------------------------	------	------	-----------	-----------



CATEGORY	A	B	C	D
LPV DA	7264-7/8		250 (300-7/8)	
LNAV/VNAV DA	7513-13/4		499 (500-13/4)	
LNAV MDA	7620-1 606 (700-1)		7620-13/4 606 (700-13/4)	
CIRCLING	7620-1 606 (700-1)		7700-2 686 (700-2)	7820-2 1/2 806 (900-2 1/2)

