

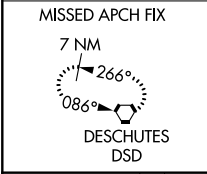
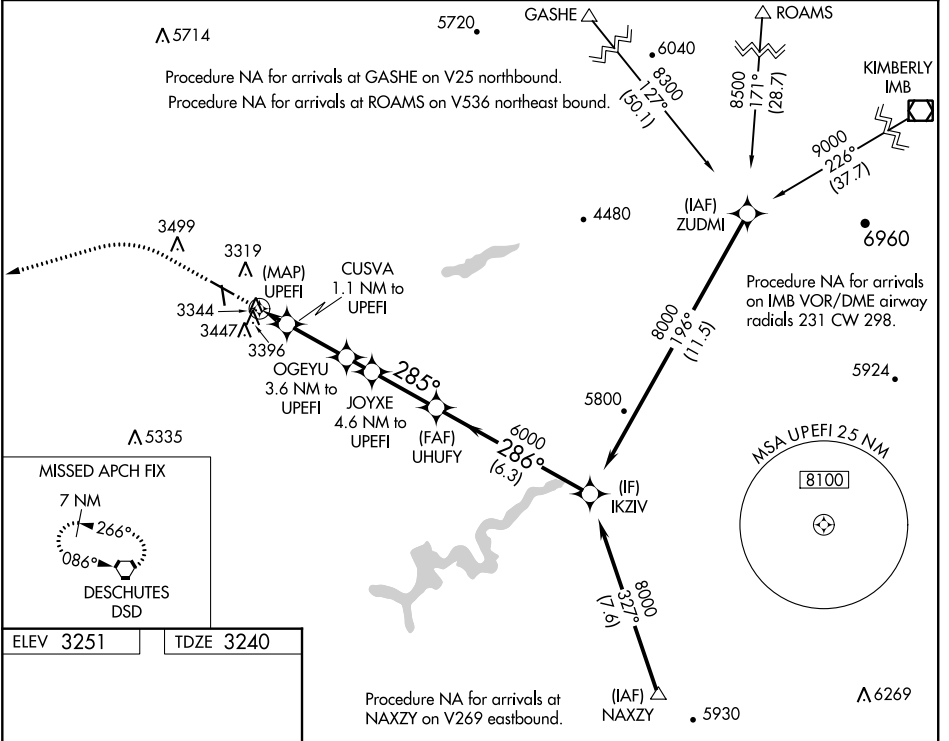
WAAS CH 56235 W29A	APP CRS 285°	Rwy Idg TDZE Apt Elev	5405 3240 3251
--	------------------------	-----------------------------	---

RNAV (GPS) RWY 29

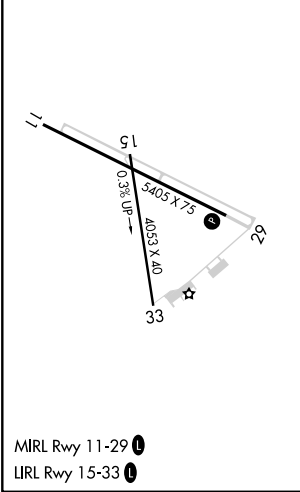
PRINEVILLE (S39)

RNP APCH-GPS.	MISSED APPROACH: Climb to 4700 then climbing left turn to 7100 direct DSD VORTAC and hold.
<p>▼ Circling NA for Cat D south of Rwy 11-29.</p> <p>▲ Circling Rwy 15 NA at night.</p>	

AWOS-3PT 118.325	SEATTLE CENTER 126.15 269.475	UNICOM 122.7 (CTAF) 0
----------------------------	---	---------------------------------



ELEV 3251	TDZE 3240
-----------	-----------



4700	7100	DSD	IKZIV	
↑	↶	⬡		
UPEFI	UPEFI	UPEFI	UPEFI	
3980	4780	5140	8000	
1.1 NM	1.1 NM	2.5 NM	1 NM	
2.6 NM	6.3 NM			
CATEGORY	A	B	C	D
LP MDA	3660-1¼ 420 (500-1¼)			
LNAV MDA	3660-1¼ 420 (500-1¼)			
☑ CIRCLING	3960-1¼ 709 (800-1¼)	4040-1¼ 789 (800-1¼)	4040-2¼ 789 (800-2¼)	4040-2½ 789 (800-2½)

NW-1, 11 AUG 2022 to 08 SEP 2022

NW-1, 11 AUG 2022 to 08 SEP 2022