

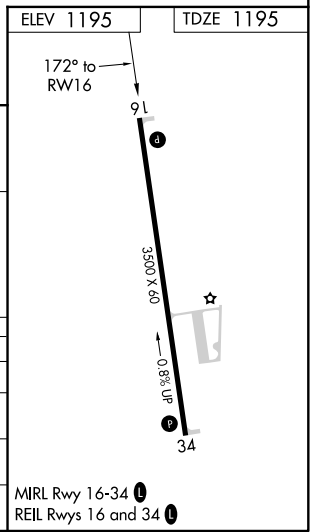
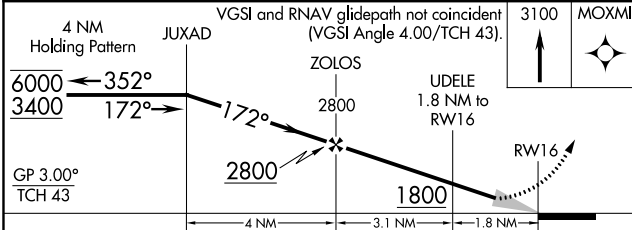
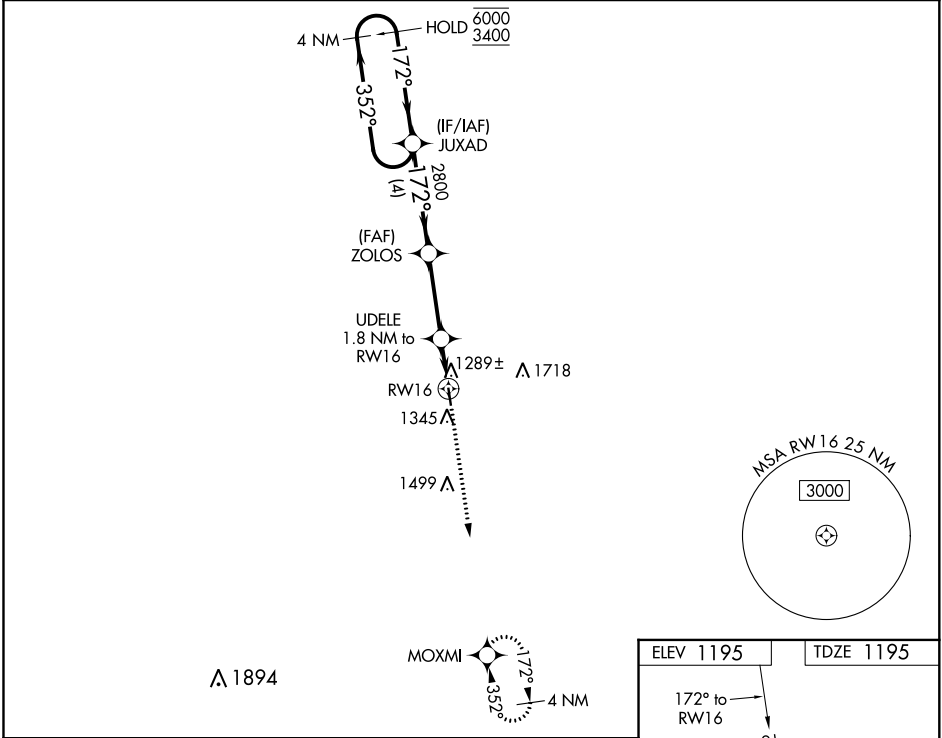
WAAS CH 97329 W16A	APP CRS 172°	Rwy Idg TDZE 1195 Apt Elev 1195
--	------------------------	---

RNAV (GPS) RWY 16

HOUSTON MEML (M48)

RNP APCH-GPS.	MISSED APPROACH: Climb to 3100 direct MOXMI and hold.
<p>▼ Baro-VNAV NA. Use Fort Leonard Wood altimeter setting, when not received use West Plains altimeter setting.</p> <p>▲ NA</p>	

TBN ASOS 118.7	KANSAS CITY CENTER 128.35 284.675	CTAF 122.90
--------------------------	---	-----------------------



	4 NM		3.1 NM		1.8 NM	
CATEGORY	A	B	C	D		
LPV DA	1513-1	318 (400-1)		NA		
LNAV/VNAV DA	1513-1	318 (400-1)		NA		
LNAV MDA	1620-1	425 (500-1)		NA		
CIRCLING	1760-1 565 (600-1)	1880-1 685 (700-1)		NA		

NC-3, 11 AUG 2022 to 08 SEP 2022

NC-3, 11 AUG 2022 to 08 SEP 2022